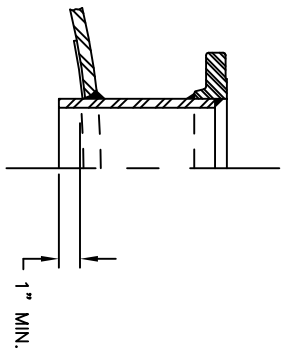
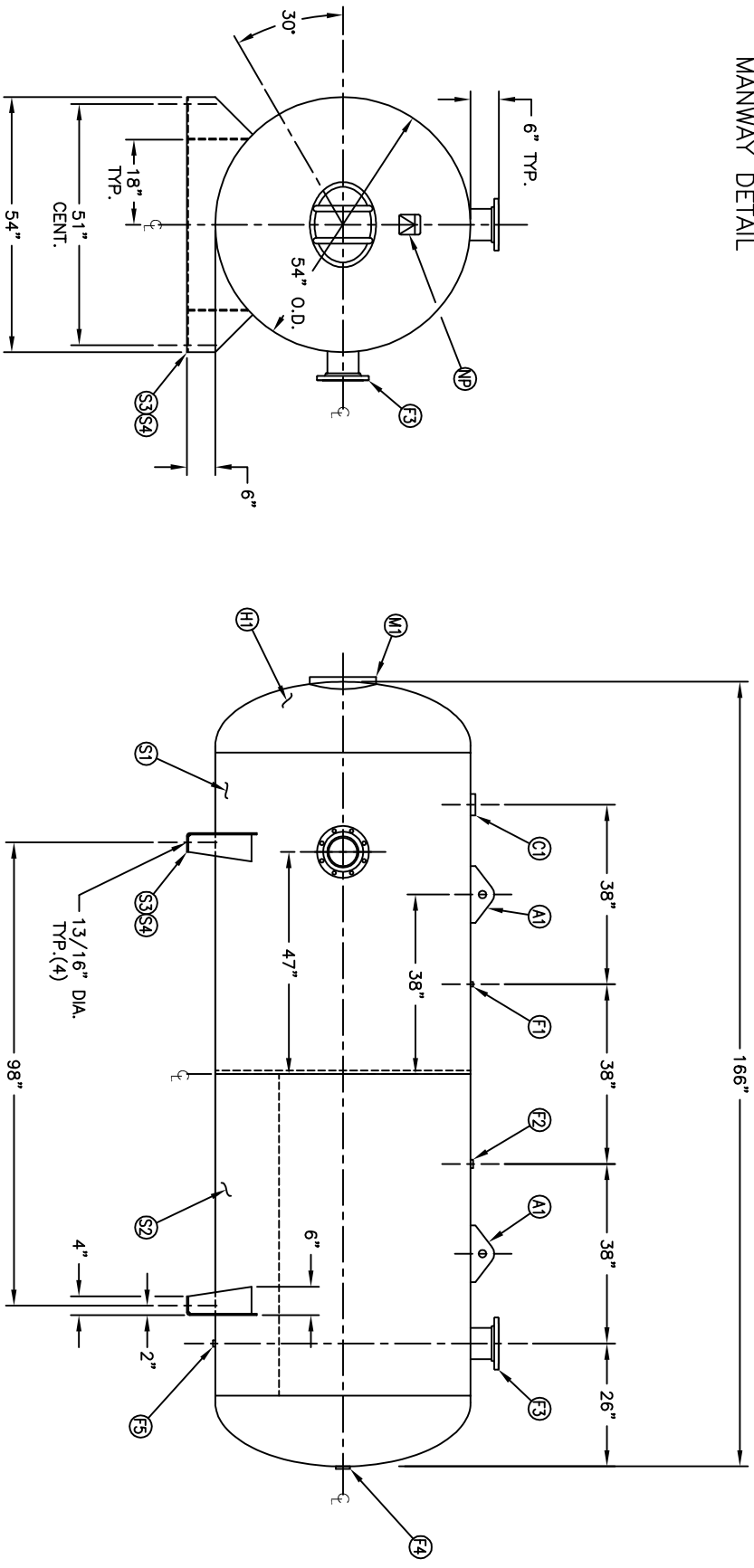


MANWAY DETAIL



NOZZLE DETAIL

NO. QTY	DESCRIPTION	SPEC	SUB-DWG.
S1 1			
S2 1			
H1 2			
C1 1	3"-NPT 3000# HALF COUPLING	SA-105	
F1 1	1/4"-NPT 1500# FLAT FLANGE	SA-181-70	
F2 1	1"-NPT 1500# RADIAL FLANGE	SA-181-70	
F3 2	6" 150# ANSI RF.SO. FLANGE	SA-105	
F3 2	6" SCH.80 PIPE X 7 1/2" LONG	SA-106-B	
F4 1	.134 X 8 5/8" O.D. X 6 5/8" I.D. BACKING RING	C1008	
F5 1	2"-NPT 1500# FLAT FLANGE	SA-181-70	
F5 1	3/4"-NPT 1500# RADIAL FLANGE	SA-181-70	
M1 1	12" X 16" X 3/4" X 4" 300# MANWAY	SA-675-10/SA-106-C	
S3 2	1/4" X 17 1/2" X 54" SADDLE BRACKET	SA-36/C1008	
S4 4	1/4" X 6" X 12 1/2" GUSSET	SA-36/C1008	
A1 2	3/4" X 5" X 12" STANDARD HORIZ. LIFT LUG		
NP 1	ASME DATA PLATE	C1010	A84358



SW/ DATE	BY	REVISION	APP	XREF	REQ.	NOTES	SPECIFICATIONS	DRAWN BY	DATE	SCALE	DRAWING NO.
						BREAK ALL EXPOSED INTERIOR NOZZLE EDGES ALL FLANGE BOLT HOLES TO STRADDLE VESSEL CENTRELINES	O.D. 54 LGTH. 166 MAWP 165 PSI @ 450 F QAL 1550 SA WT. 2700# CODE ASME SECT. VIII, DIV. 1 PER DATE OF DWG/LAST REV			NONE	302496



54" X 166"  
STANDARD AIR RECEIVER