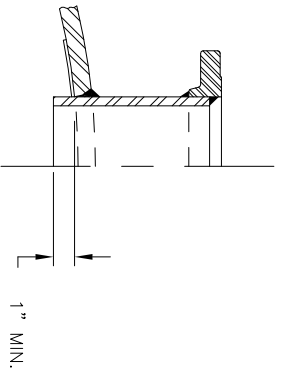
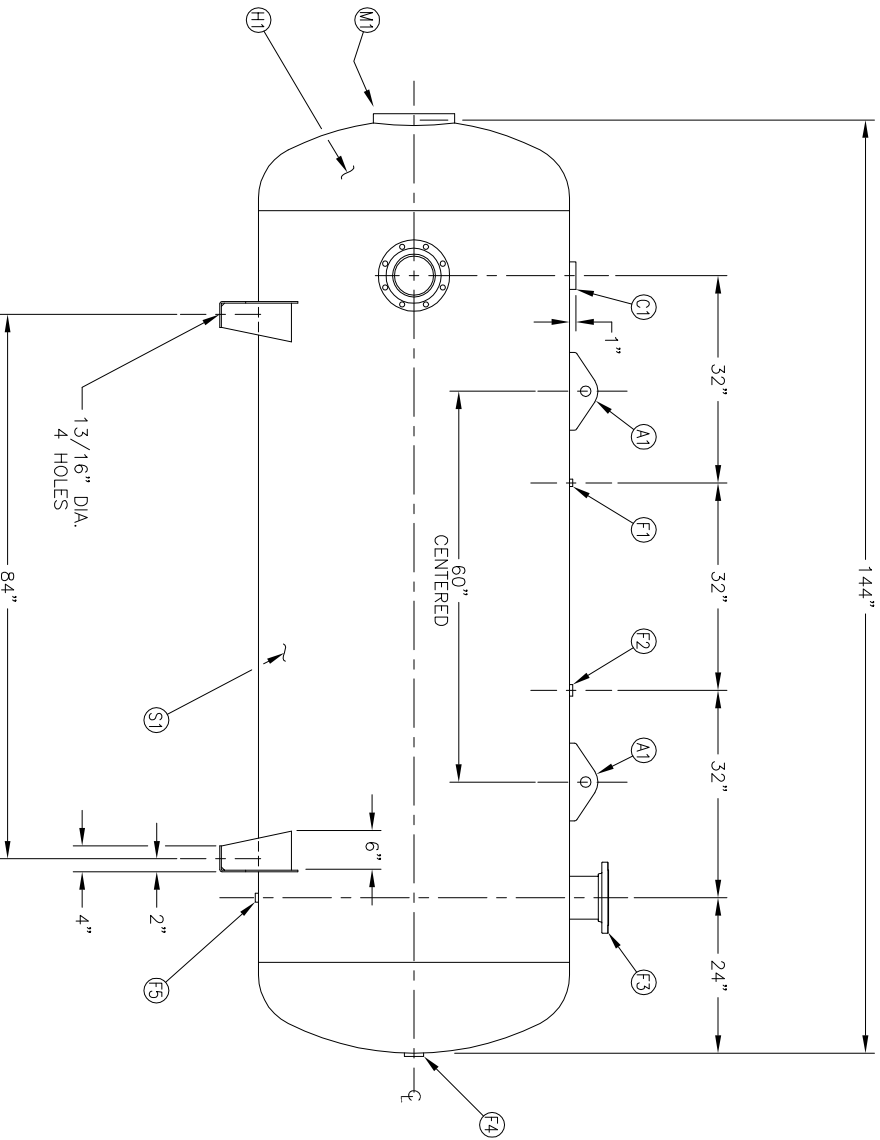
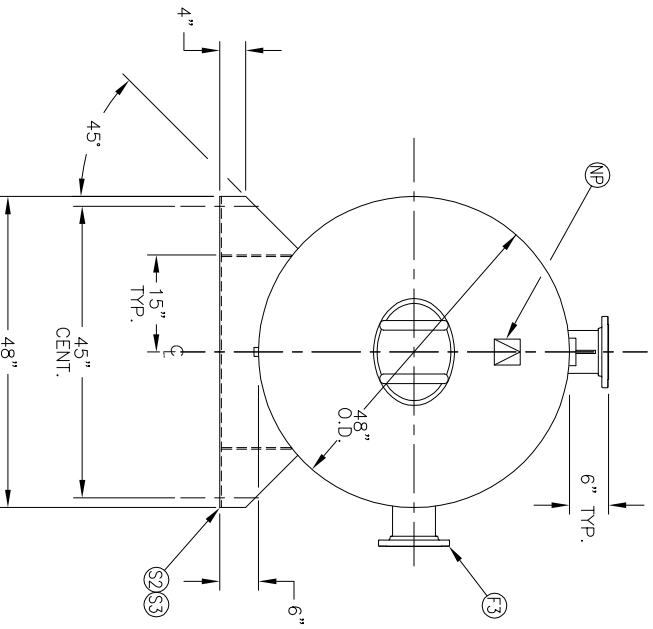


MANWAY DETAIL



6" NOZZLE DETAIL

NO. QTY	DESCRIPTION	SPEC	SUB-DWG.
S1 1			
H1 2			
C1 1	3"-NPT 3000# HALF COUPLING	SA-105	
F1 1	1/4"-NPT 1500# FLAT FLANGE	SA-181-70	
F2 1	1"-NPT 1500# RADIAL FLANGE	SA-181-70	
F3 2	6" 150# ANSI REF.SO. FLANGE	SA-105	
F3 2	6" SCH.80 PIPE X 7 1/2" LONG	SA-106-B	
F3 2	.134 X 8 5/8" O.D. X 6 5/8" I.D. BACKING RING	C1010/SA-36	
F4 1	2"-NPT 1500# FLAT FLANGE	SA-181-70	
F5 1	3/4"-NPT 1500# RADIAL FLANGE	SA-181-70	
M1 1	12" X 16" X 3/4" X 4" 300# MANWAY	SA-6/5-70/SA-106-C	
S2 2	1/4" X 15 11/16" X 48" SADDLE BRACKET	C1008	
S3 4	1/4" X 6" X 10 11/16" GUSSET	C1008	
A1 2	3/4" X 5" X 12" STANDARD LIFT LUG FOR HORIZ.		
NP 1	ASME DATA PLATE	C1010	A84388



SWM DATE BY	REVISION	APP XREF REV	NOTES	SPECIFICATIONS	DRAWN BY	DATE	SCALE
			BREAK ALL EXPOSED INTERIOR NOZZLE EDGES ALL FLANGE BOLT HOLES TO STRADDLE VESSEL CENTERLINES	O.D. 48 LGH. 144 MAMP 200 PSI @ 400 F GAL. 1060 SA WGT. 2500 CUFT. CORR ALW --- SH --- HD CODE ASME SECT. VIII, DIV. 1 PER DATE OF DWG/LAST REV WELD DETAILS: M-1932 STD. TOLERANCES (UNLESS OTHERWISE NOTED): M-2461	<b>MANCHESTER</b> 48" X 144" STANDARD AIR REC. Q:\3000		NONE

DATE	BY	REVISION	APP	XREF	REV	DATE	BY	DATE	SCALE	DRAWING NO.
									NONE	302494