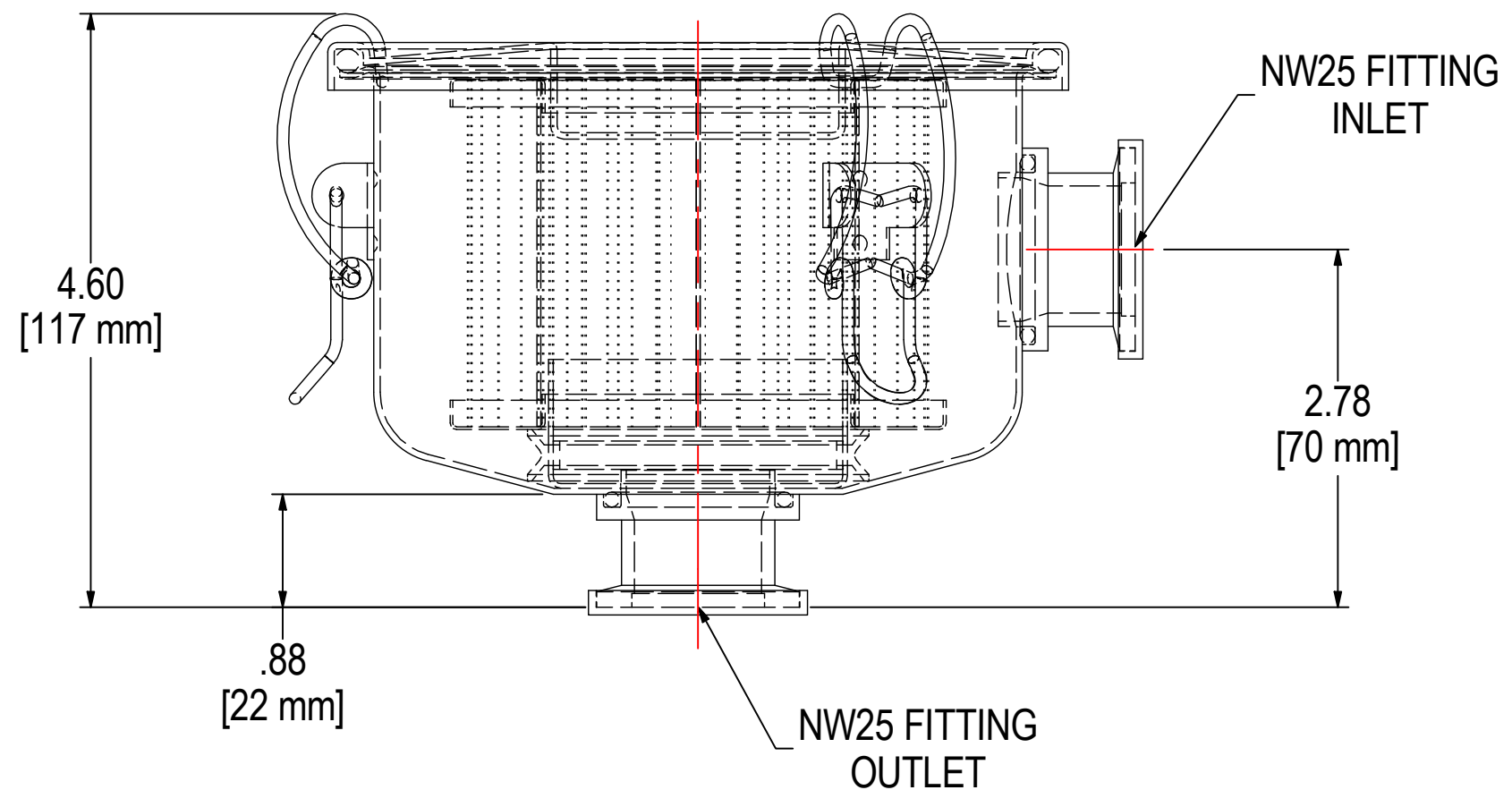
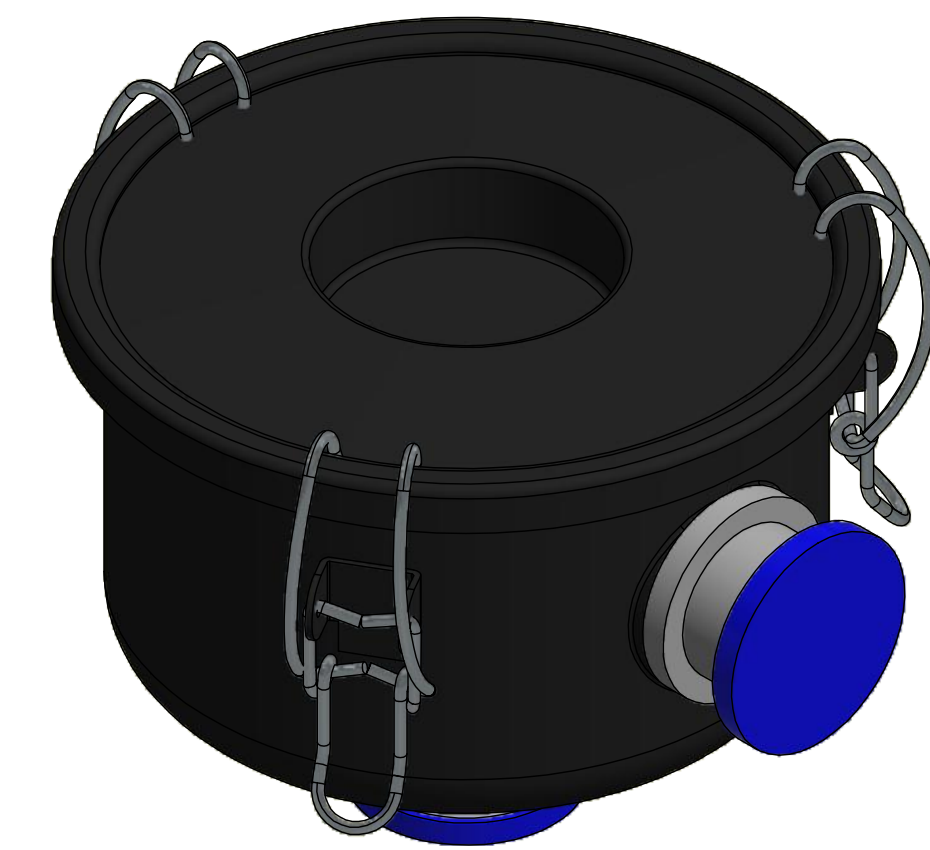
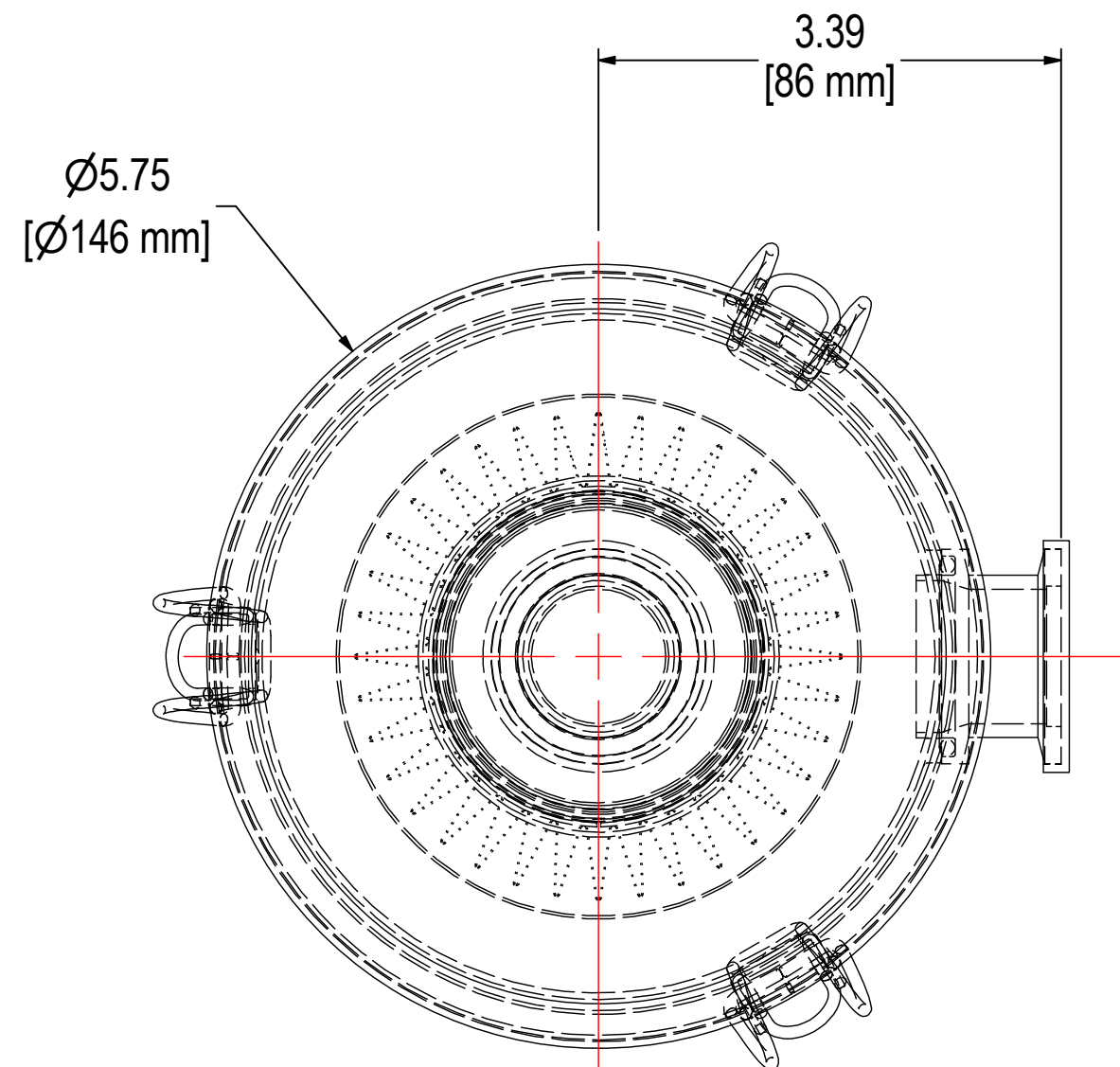


REV	DESCRIPTION	ECN #	CHG BY	DATE	APP'D
A	UPDATED PART NUMBER, WAS CSL	15527	EZR	02/14/19	TAS
B	UPDATED TO CURRENT STYLE	18198	NAS	01/23/20	JSR



NOTES & SPECIFICATIONS:

1. FLANGES TO BE PROTECTED DURING PRODUCTION & SHIPMENT.
2. UNIT TO BE HELIUM LEAK TESTED TO 1×10^{-5} mbar L/s.

ELEMENT SPECS		
PART NUMBER	843	
MATERIAL	POLYESTER	
FLOW RATE	55 CFM	93 m ³ /hr
SURFACE AREA	0.6 ft ²	0.1 m ²
I.D.	2.38"	60mm
O.D.	3.85"	98mm
HEIGHT	2.73"	69mm

MODEL #: WL-843-NW25B	MATERIAL: CARBON STEEL	FINISH: BLACK POWDER	SHEET: 1 OF 1
MODEL NUMBER: WL-843-NW25B		DESCRIPTION: WL-843-NW25B, BLACK	
PROJECT: SD18629	DRAWN BY: CRW	APPROVED BY: MJC	REV: B
	DATE: 9/27/2012	DATE: 9/27/2012	

SOLBERG
Filtration • Separation • Silencing
630.773.1363 • www.solbergmfg.com

THE INFORMATION CONTAINED HEREIN IS CONFIDENTIAL AND THE PROPERTY OF SOLBERG MANUFACTURING INC. AND IT IS FURNISHED TO YOU WITH THE EXPRESS UNDERSTANDING THAT IT WILL NOT BE REPRODUCED, COPIED IN ANY MANNER, LOANED OR OTHERWISE TRANSFERRED TO OTHERS ENTIRELY OR IN PART, NOR USED FOR ANY PURPOSE OTHER THAN FOR WHICH IT WAS FURNISHED. IT WILL BE RETURNED UPON REQUEST TO SOLBERG MANUFACTURING INC. THE ABOVE RESTRICTION IS IN ADDITION TO, AND DOES NOT IN ANY WAY ALTER, ANY OTHER RESTRICTIONS WHICH MAY APPLY TO THE INFORMATION CONTAINED HEREIN.

TOLERANCES
DIMENSIONS ARE FOR REFERENCE ONLY. ALL DIMENSIONS ARE SUBJECT TO CHANGE UPON PRODUCTION.
UNLESS OTHERWISE SPECIFIED:
-DIMENSIONS ARE IN INCHES
-REF: APPROXIMATE DIMENSIONS, NO TOLERANCES APPLY
-FINISH: BREAK EDGES TO .005-.020 RADIUS/CHAMFER