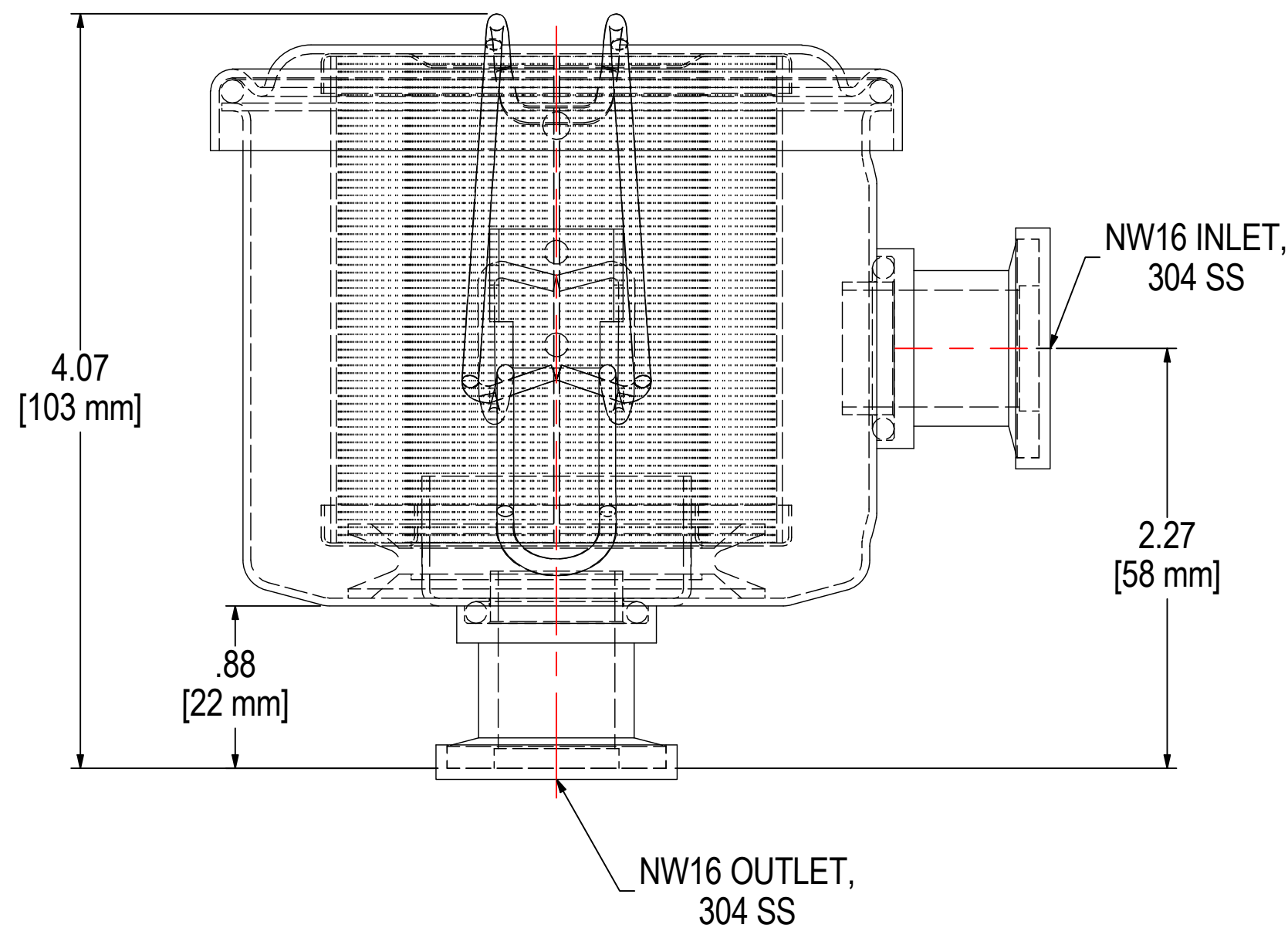
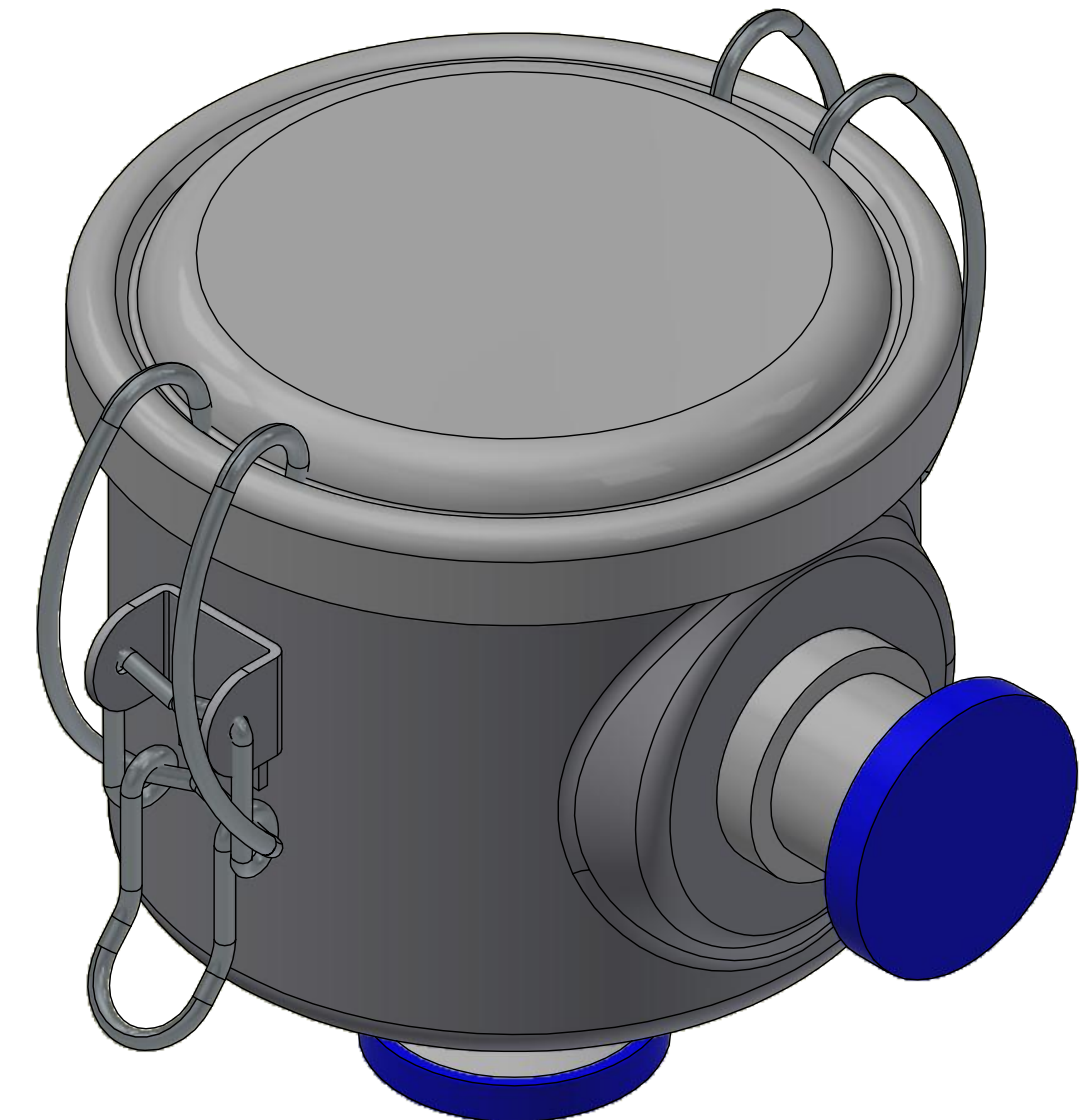
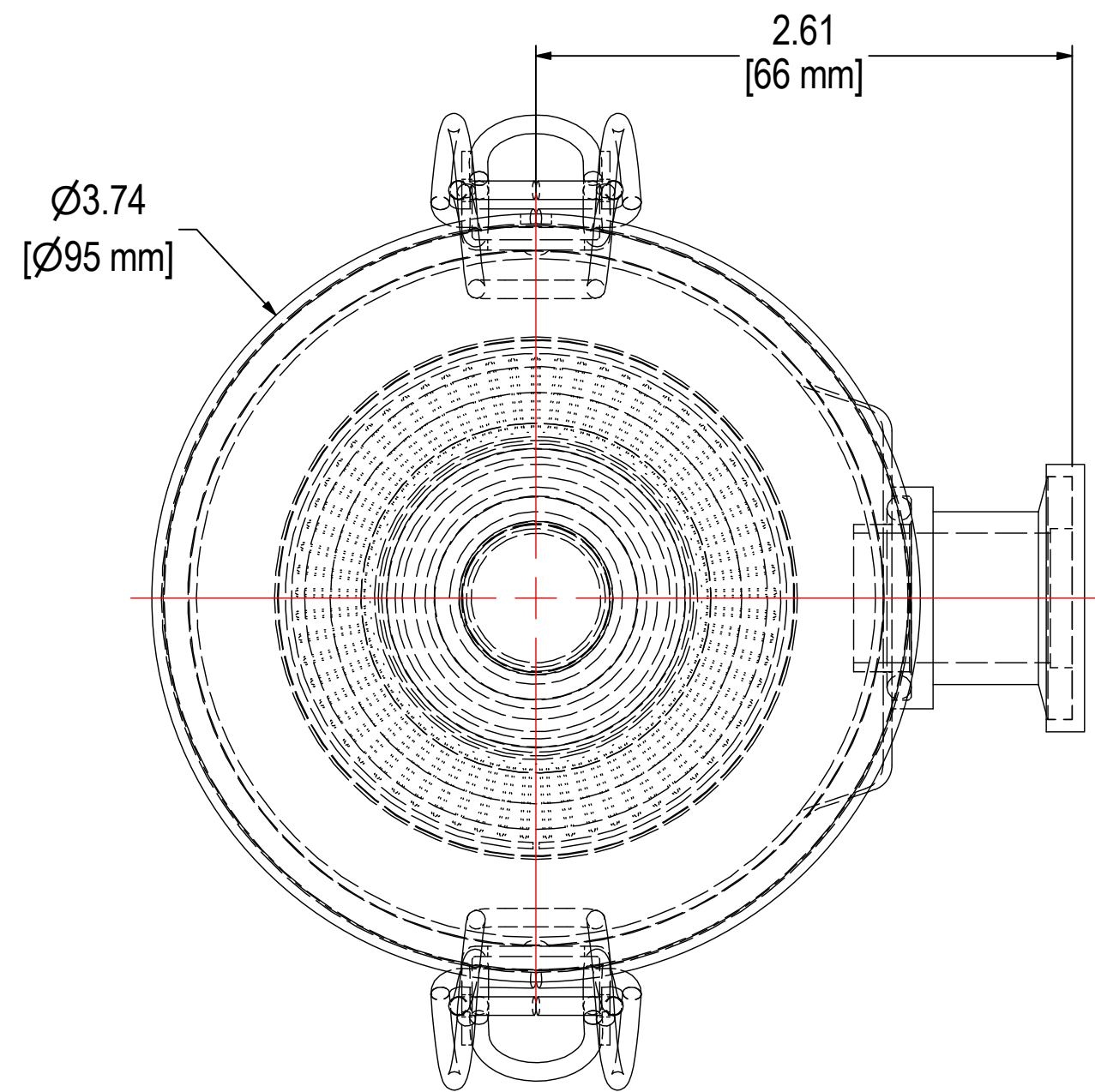


REV	DESCRIPTION	ECN #	CHG BY	DATE	APP'D
A	CONVERTED TO 3D; UPDATED P/N, WAS CSL; ADDED NOTES	17887	RWK	12/06/19	EZR



**NOTES & SPECIFICATIONS:**

- △ 1. FLANGES TO BE PROTECTED DURING PRODUCTION & SHIPMENT.
- 2. UNIT TO BE HELIUM LEAK TESTED TO  $1 \times 10^{-5}$  mbar L/s.

ELEMENT SPECS		
PART NUMBER	824	
MATERIAL	PAPER	
FLOW RATE	25 CFM	42 m <sup>3</sup> /hr
SURFACE AREA	0.8 ft <sup>2</sup>	0.1 m <sup>2</sup>
I.D.	1.50"	38mm
O.D.	2.54"	65mm
HEIGHT	2.65"	67mm

<b>MODEL #:</b> WL-824-NW16EN	<b>MATERIAL:</b> CARBON STEEL	<b>FINISH:</b> ELECTROLESS NICKEL
<b>MODEL NUMBER:</b> WL-824-NW16EN		<b>SHEET:</b> 1 OF 1
<b>DESCRIPTION:</b> WL-824-NW16EN, ELECTROLESS NICKEL		
<b>PROJECT:</b> SD19913	<b>DRAWN BY:</b> CRW <b>DATE:</b> 10/31/2013	<b>APPROVED BY:</b> MC <b>DATE:</b> 10/31/2013
		<b>REV:</b> A