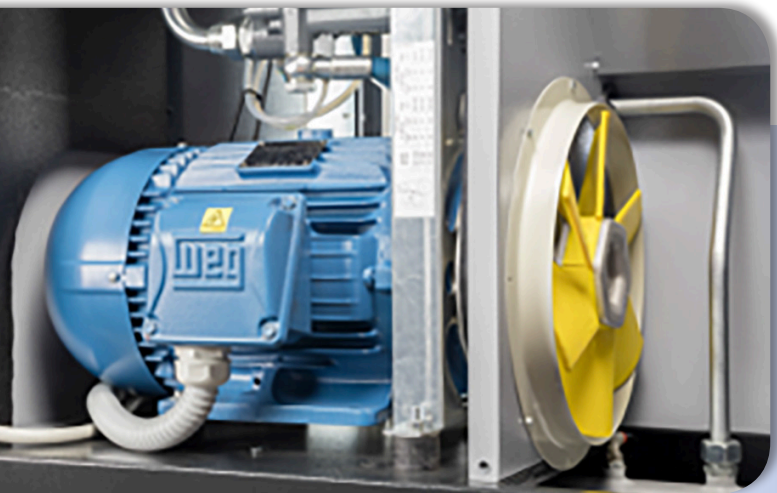


▶▶▶ SMART TECHNICAL ADVANTAGES



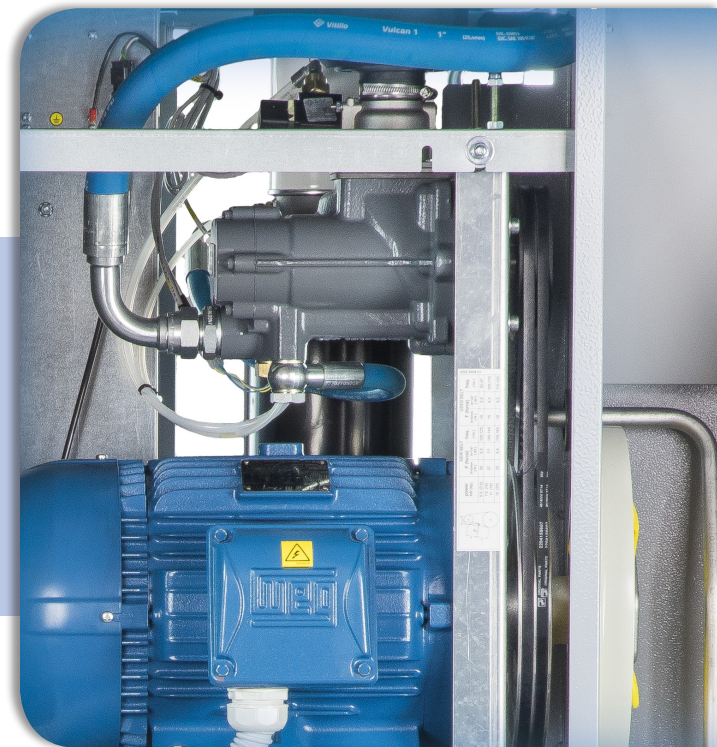
An all-in-one solution

- Save space and money with tank mounted installations including dryer and filters.
- The complete solution not only saves costs on installation, but also reduces the risk of air leakages in your workshop.



Built to last

- Built for 100% continuous duty cycle.
- Designed to operate at ambient temperatures up to 115° F.
- An oversized ventilation ensures low internal temperatures, making your compressor live better and longer.



Robust & Efficient Compressor Elements

- A new generation of compressor elements provides top performance aligned with low energy consumption and a long lifetime for your investment



High Quality Air Delivery

- Units built on air receivers can be equipped with an air treatment package complete with a refrigerant dryer.
- This air treatment package guarantees dry and very clean air, perfect for the most demanding applications.



Oil Injected
Screw Compressors,
Belt Driven - MSU



- A high quality product offering you **technology you can trust**.
- Our products are **easy to use** and guarantee high **reliability**.
- Distributors are always nearby ensuring **availability** of both products and support.
- Choosing our high performance products entails a **partnership** that will boost your business.
- Safeguarding long-term productivity through optimal **serviceability** and use of original parts.

Contact Your Local Representative:

www.mark-compressors.com/en-us

Mark Compressors USA
300 Technology Center Way, Suite 550
Rock Hill, SC 29730
1-877-861-2722



Use only authorized parts. Any damage or malfunction caused by the use of unauthorized parts is not covered by Warranty or Product Liability.

CARE

Care is what service is all about: professional service by knowledgeable people, using high-quality original parts.

TRUST

Trust is earned by delivering on our promises of reliable, uninterrupted performance and long equipment lifetime.

EFFICIENCY

Equipment efficiency is ensured by regular maintenance. Efficiency of the service organization is how Original Parts and Service make the difference.

© 2021, Mark. All rights reserved. All mentioned brands, product names, company names, trademarks and service marks are the properties of their respective owners. Our products are constantly being developed and improved. We thus reserve the right to modify product specifications without prior notice. Pictures are not contractually binding.



6999200411

© 2017, MARK. All rights reserved. All mentioned brands, product names, company names, trademarks and service marks are the properties of their respective owners. Our products are constantly being developed and improved. We thus reserve the right to modify product specifications without prior notice. Pictures are not contractually binding.

▶▶▶ MSU 11-20 HP

Oil-Injected Screw
Compressors
Belt Driven



The perfect solution for
the small businesses.





User Benefits

A Complete Solution

- Very compact all in one design
- Base mounted unit requires less than a square meter
- Available on air receiver
- Also with dryer and filters if needed
- Full protected for transport
- No special foundation required
- Very low vibration and noise level
- Easily installed inside the workshop, very close to the air usage point

Legendary reliability

- Robust and reliable design
- Built with first-class components
- New generation of rotary screw element allows you to work on 100% continuous duty cycles and very hard working conditions
- An oversized ventilation ensures low internal temperatures, making your compressor live better and longer
- The complete unit is designed to operate at ambient temperatures up to 115 ° F

Easy Maintenance and Accessibility

- All service components located at the front of the machine for excellent accessibility
- All service components strategically located for excellent accessibility
- Oil-level sight glass at the front, visible without removing any panel
- Easy and quick check thanks to the controller
- Service and cleaning is a one person job

Cost Efficiency

- Reliable design
- Low maintenance costs
- Long service intervals
- Low energy consumption, thanks to reputed IE3 Motors and advanced screw compressor element
- High performing lubrication and cooling systems

MSU 11-20 HP

Compressed air drives most of the businesses, consequently choosing the right compressor is one of the most important decisions your company can make. Our MSU range is a robust and reliable belt driven oil-injected screw compressor - a first-class product that can be easily equipped with an air receiver, a refrigerant dryer, pre and post filters, offering you a compact and complete solution for your business.

The MSU legendary reputation was built throughout the years based on MARK's constant investment in new technologies and quality improvement, being today a safe choice that you will never regret.

Bring fresh air into your company and enjoy the performance, simplicity and the reliability that only MARK can offer.

THE PERFECT SOLUTION FOR THE SMALL BUSINESSES

MSU 11-20 HP

Easy to use, efficient and reliable, the MSU range meets the compressed air demands of tire shops, paint shops, car dealers, maintenance shops, small industries in general.

Quiet by design, the MSU can be installed almost anywhere in the workshop, without disturbing your working environment. Base mounted or tank mounted, with or without dryer and filters, the MSU is a complete solution for your business.



Components



- | | | |
|------------------|--------------------------------|------------------------------|
| 1 Controller | 5 Oil cooler | 10 Belt drive system |
| 2 Emergency stop | 6 Oil separator vessel | 11 Compressor element |
| 3 PDP controller | 7 Oil filter and oil separator | 12 Refrigerant dryer |
| 4 Dryer switch | 8 Oil level sight glass | 13 Pre and post line filters |
| | 9 Electric motor | 14 Safety valve |

MSU 11-20 HP

Technical Data

Model	Max. Working Pressure		Power	Flow	Noise Level **	Weight (lbs.)		
	PSI	HP	HP	cfm	dB(A)	Base Mounted	Tank Mounted	Tank Mounted w/ Dryer
MSU 11	116	10	37.5	66	375	589	661	
	145		33.9					
MSU 15	116	15	51.9	68	408	622	694	
	145		45.1					
MSU 20	116	20	61.2	71	441	655	728	
	145		60.4					

* Unit performance measured according to ISO 1217, Annex C, latest edition
 ** Noise level measured according to ISO 2151:2004 using ISO 9614/2

All Air Outlet Connections = 1/2" or 3/4" depending on configuration



Dimensions

	Length (In.)	Width (In.)	Height (In.)
Base Mounted	33.7	26.6	38.6
Tank Mounted (71 Gal)	76.2	25.4	57.9

Intelligent monitoring, control and protection

The ES 4000 Basic Controller offers advanced monitoring and simple day-to-day configuration and control for your operation.

- Icon-based display with pressure and temperature readings
- Running hours, load hours
- Maintenance warnings
- Failure alarms
- Fast pressure setting directly on the controller
- Remote start-stop
- Automatic restart after power failure

