

1 2 3 4 5 6 7 8

A

B

C

D

E

F

A

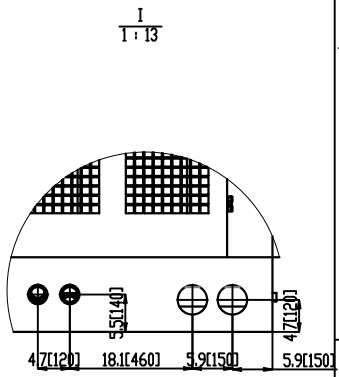
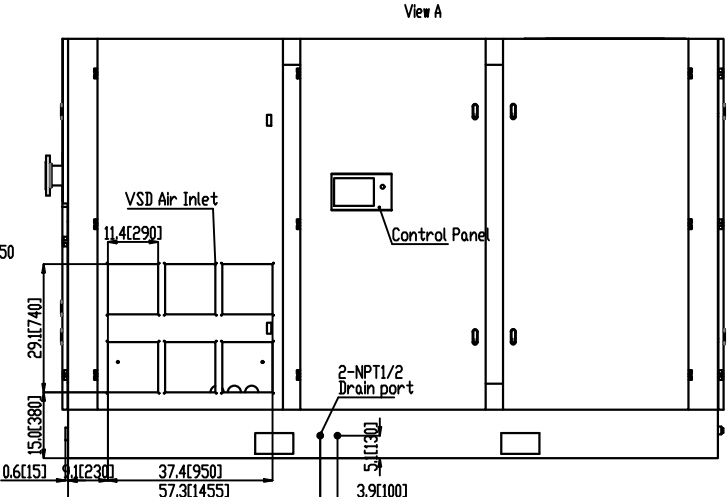
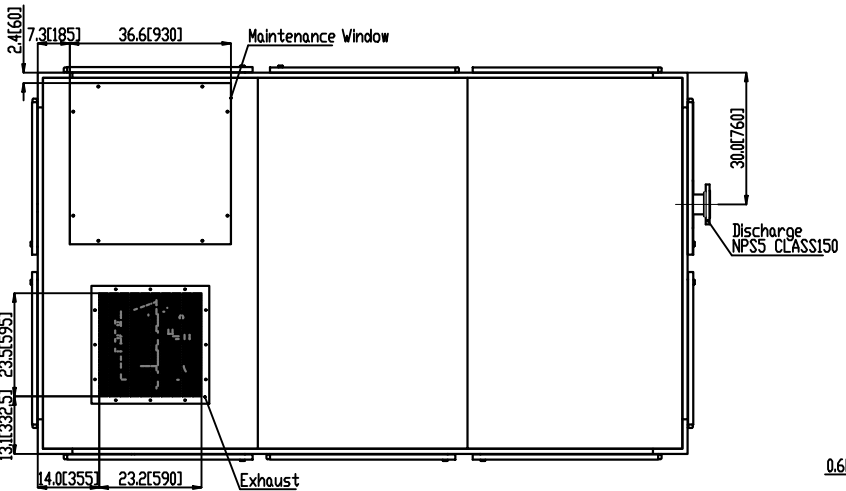
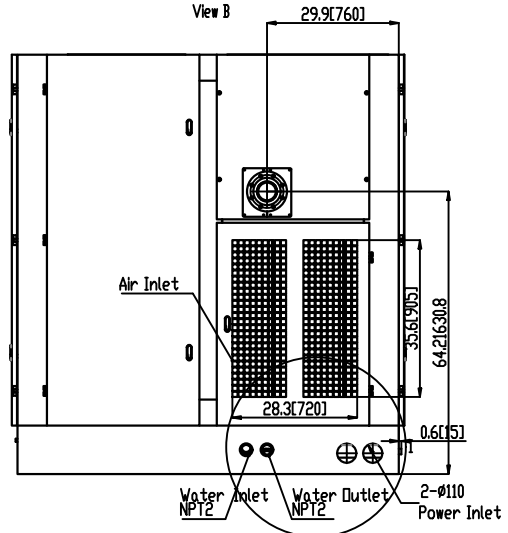
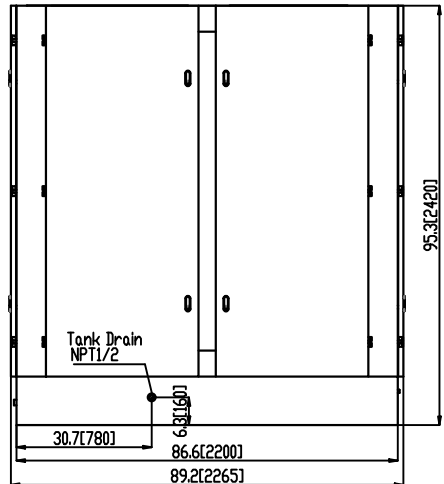
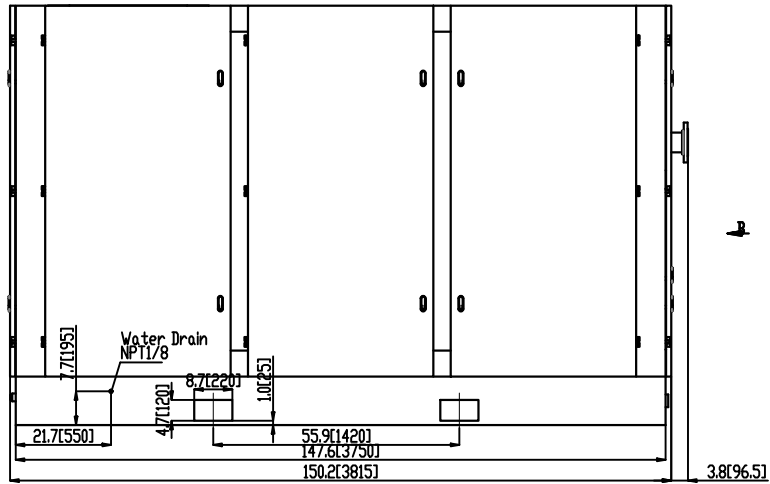
B

C

D

E

F



1
1:13

Specification

- The compressor must have at least 4 feet of clearance around all side for proper ventilation and cooling.
- The compressor must be installed on a smooth, level surface capable of supporting the gross weight of the machine.

UNLESS OTHERWISE SPECIFIED

TOLERANCE ON ANGLES: +/- 0.5 DEGREE

MACHINED PARTS TOLERANCE: +/- 0.03 in

SHEETMETAL TOLERANCE: +/- .13 in

FINISH ON MACHINED SURFACES $\nabla_{12.5}$

DESIGN			STD		
CHECK			AUDITING		
			APPROVE		

KRSP-400/500WC VSD			Outline Dimensions	
PHASE SIGN	WEIGHT	SCALE	SPV400/500W-100.00	
S		1:20	REF. ONLY	
SHEET	1	OF 1	NEXT ASSE	

1 2 3 4 5 6 7 8