



FSCURTIS



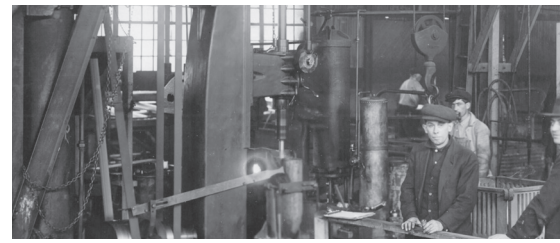
RECIPROCATING AIR COMPRESSORS
2- 10 HP

CT SERIES



SOME COMPANIES ARE FOUNDED ON HARD WORK. OTHERS ARE FOUNDED ON IDEALS.

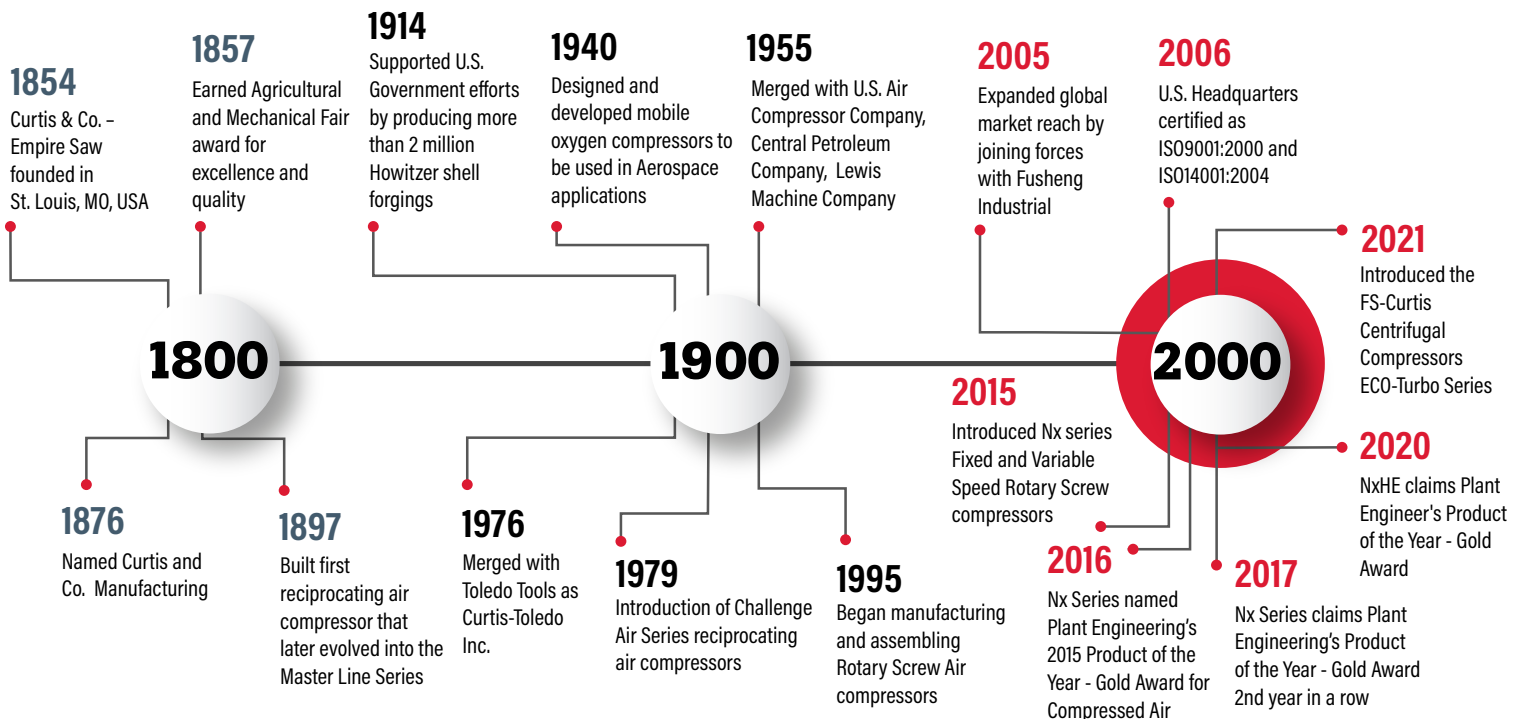
FS-CURTIS WAS FOUNDED ON BOTH.



One-hundred and seventy years ago, the FS-Curtis way of doing business was established through two key commitments: a dedication to building quality products and a dedication to responsive customer service.

Over the decades, the company and its products have evolved through innovation and new technologies. But those commitments to quality and service remain unchanged. Today, just as in 1854, FS-Curtis customers can depend on our products for reliable, long-term service. Equally as important, they can depend on getting the same from our people.

A HISTORY OF EXCELLENCE



PERFORMANCE. DURABILITY. AFFORDABILITY.

EXCEPTIONAL VALUE

You shouldn't have to sacrifice quality and durability with your air compressor purchase. That's why FS-Curtis created the CT Series. These reciprocating compressors combine our signature performance and reliability with a simple industrial design, making them the most rugged - and affordable - compressors in their category. The field-proven CT Series will last longer in the same conditions than other compressors that claim 100% cast-iron construction but still use aluminum for critical components. For light automotive, light industrial and other applications, they're the ideal choice.



CT SERIES

TECHNICAL DATA

ELECTRIC MODELS									
MODEL	HP	PUMP	CFM @ 175 PSI	CONFIGURATION	TANK (gal.)	DIMENSIONS			WEIGHT lbs.
						H (in)	W (in)	D (in)	
CT5*	5	CT55	15.9	Vertical	60	74	34	24	475
CT5*	5	CT55	15.9	Vertical	80	73	33	27	515
CT5	5	CT55	178	Vertical	80	73	33	27	515
CT7.5	7.5	CT75	24.2	Vertical	80	73	36	27	573
CT10	10	CT75	29.7	Horizontal	120	53	74	25	833

*Equipped with motor thermal overloads. No magnetic starter required.

GAS-DRIVEN MODELS									
MODEL	HP	ENGINE	PUMP	CFM @ 175 PSI	TANK (gal.)	DIMENSIONS			WEIGHT lbs.
						H (in)	W (in)	D (in)	
CT13-H	13	Honda	CT75	24.8	30	45.5	42	21	460
CT14-K	14	Kohler	CT75	25.4	30	43	50	24	486

CT SERIES

FEATURES AT A GLANCE

100% CAST-IRON CYLINDERS, CYLINDER HEADS CONNECTING RODS, AND HIGH PRESSURE PISTONS

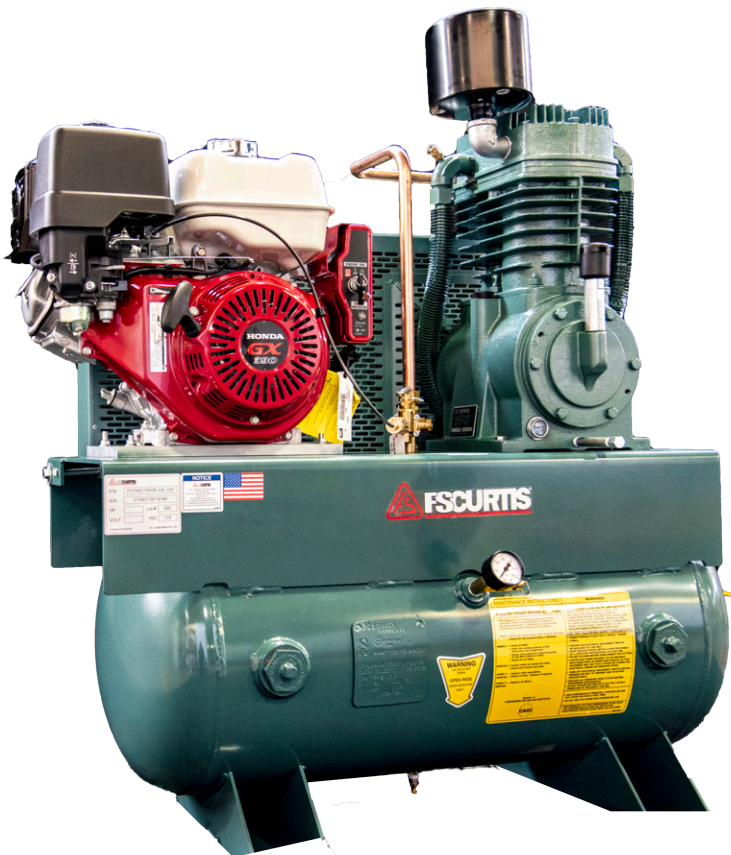
- Two-stage cast-iron pump is significantly more durable than pumps with aluminum components
- Deep-finned cast-iron cylinders and heads for cool operation
- Industry-leading cast-iron cylinders high-pressure pistons for extreme durability
- Ductile iron crankshaft is stronger, more corrosion-resistant and less likely to break

QUALITY COMPONENTS

- High-flow, heavy-duty stainless steel channel valve system delivers more cfm per horsepower
- Precision-fit, industrial-grade main roller bearings support all rotating parts for longer pump life
- Robust intercooler increases compressor efficiency
- Oil level sight glass is conveniently located for easy monitoring
- Metal intake filter/silencer is superior to plastic

VALUE-MINDED INDUSTRIAL DESIGN

- Provides higher pressures and longer life than single-stage pumps
- Follows the same world-class quality design standards as other FS-Curtis products
- Slow turning pump increases pump life
- Robust design sets the CT Series apart from comparable entry-level models



CT SERIES

FEATURES AT A GLANCE

SIMPLEX COMPRESSORS - STANDARD FEATURES

- Magnetic motor starter*
- Cast-iron 2-stage pump built to ISO 9001 standards
- Slow speed pump with V-belt drive
- Rugged NEMA motor with UL-approved electric design
- ASME air tank
- OSHA-approved totally enclosed metal belt guard
- UL-approved pressure switch
- Automatic start-stop control
- Metal intake filter/silencer
- Manual tank condensate drain valve
- Dial read-out pressure gauge
- Loadless starting
- ASME-approved safety valve
- ASME-approved discharge valve
- Factory oil filled

**CT5 units with 3550 rpm motor use thermal overloads, no magnetic starter required.*

GAS-DRIVEN COMPRESSORS - STANDARD FEATURES

- Heavy-duty 100% cast-iron pump construction for dependable operation
- Slow speed design for extended life
- OSHA-approved totally enclosed metal belt guard
- ASME-approved air receiver
- 12V DC starter with alternator
- Engine idle control
- ASME-approved discharge valve



CONTINUED COMMITMENT

A company history that dates 170 years is a company history that, to us, is just the beginning. FS-Curtis is committed to offering a world-class portfolio of products. Through the dependability of our people and our quality-focused manufacturing, FS-Curtis will continue to be the most trusted and dependable name in compressed air serving even more markets through our ever-growing global presence.

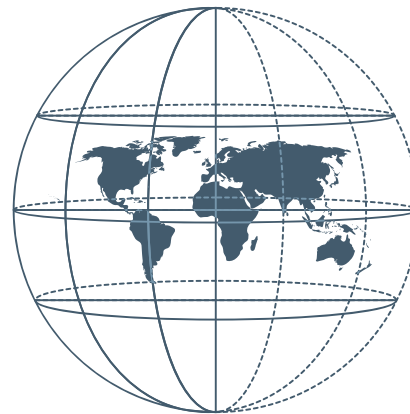


You can count on **FS-Curtis** to approach the next 170 years by staying true to the values and strengths that are appreciated by our customers today.

A WORLD OF DIFFERENCE

The FS-Curtis headquarters in St. Louis, Missouri, U.S.A. is the anchor of a larger global network. FS-Curtis builds quality products – and a quality reputation – at locations around the world.

In addition to our manufacturing and packaging locations, a large global network of sales agents and distributors ensures that sales and service support is available around the world, day in and day out.



ST. LOUIS, MO USA (HEADQUARTERS)

TAIPEI, TAIWAN (FUSHENG HQ) | SHANGHAI, CHINA (FUSHENG)
PITTSBURGH, PA USA (FS-ELLIOTT) | KONGEN, GERMANY (ALMIG)
PUNE, INDIA (FS-CURTIS) | HO CHI MINH CITY, VIETNAM (FUSHENG)

Distributed By:



CURTIS-TOLEDO, INC.

1905 KIENLEN AVENUE | ST. LOUIS, MO 63133

+1 314-383-1300 | WWW.FSCURTIS.COM | INFO@FSCURTIS.COM



CORPLITERATURE: FSL-CTBROCHUREREV1
Improvements and research are continuous at FS-Curtis. Specifications may change without notice.

© 2023 CURTIS-TOLEDO, INC.