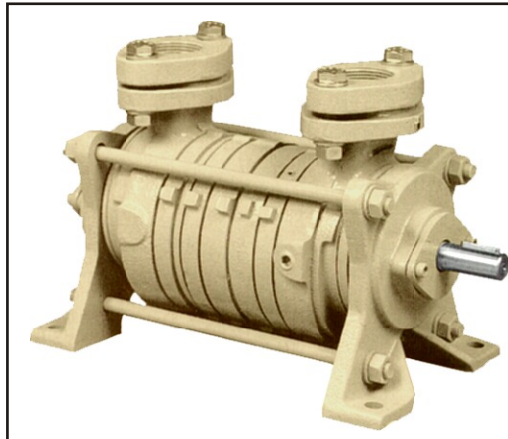


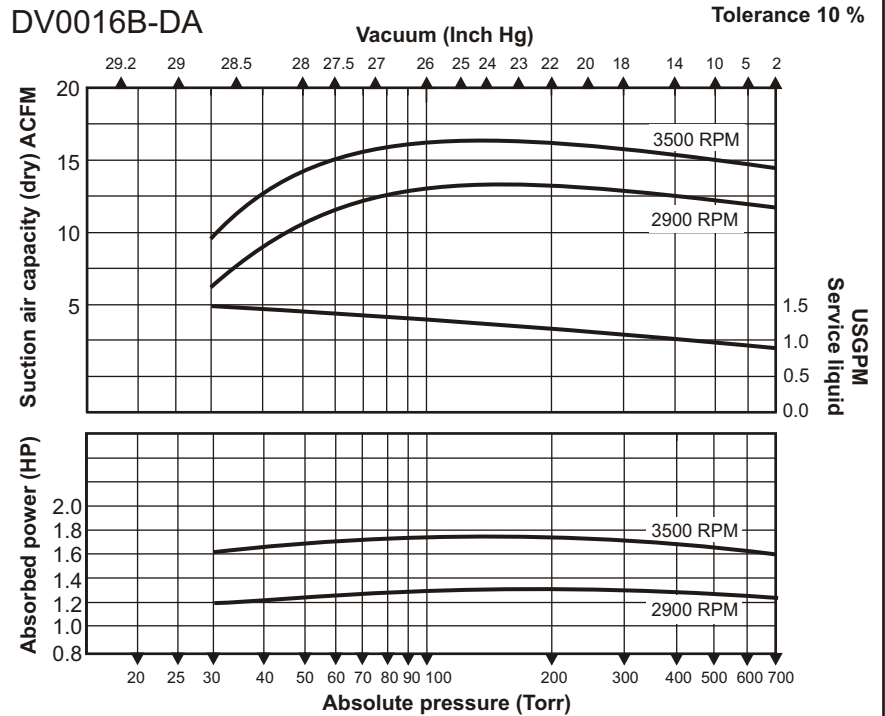
Presenting the **TITAN** SERIES
two-stage liquidring
vacuum pump.

Why should you consider this vacuum pump for your application?

- ◆ Designed for heavy duty applications.
- ◆ Optional monoblock adaptor available, which utilizes NEMA C-face motors.
- ◆ Manufactured to ISO 9001 standards
- ◆ Low operating noise level.
- ◆ Heavy duty bearings mounted external to the pumping chamber.
- ◆ Features single face mechanical seals as standard.
- ◆ Virtually no maintenance is required.
- ◆ Capable of handling saturated gas mixtures.
- ◆ Capable of handling small amounts of liquids.
- ◆ Only one moving part.
- ◆ Can operate using various seal-fluids.

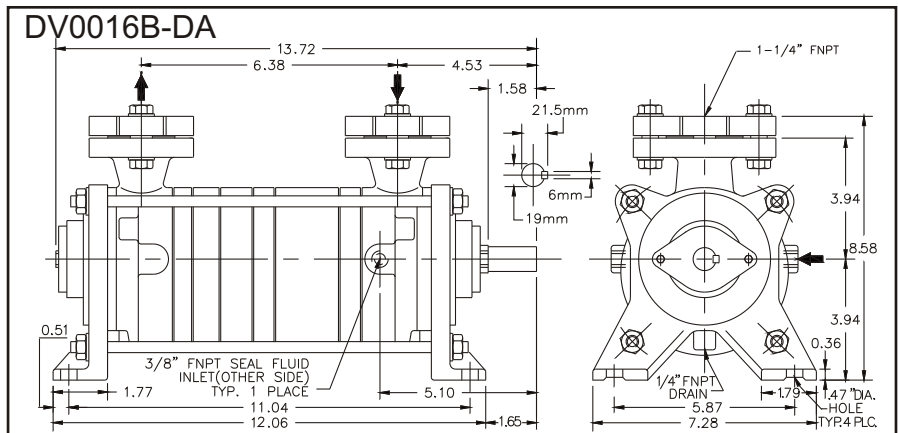


Performance characteristics
 Nominal capacity: 15CFM
 Motor: 50Hz/1.5HP/1.1kW
 60Hz/2HP/1.5kW
 Speed(RPM): 50Hz/2900
 60Hz/3500
 Max.vacuum: 28.7"Hg/30Torr
 Weight (bare-shaft): 50Lbs/23kg
 Max. gas inlet temp: 212°F/100°C
 Max.noise level(at 3ft): 66dBA
Performance based on dry air, seal-water temperature 60°F and atmospheric pressure of 29.92"Hg.



Materials of construction/Seal code				
Mat.code	1	2	3	4
Casing	NA	cast iron	NA	NA
Portplate	NA	cast iron	NA	NA
Impeller	NA	bronze	NA	NA
Shaft	NA	420 SS	NA	NA
Seal code	NA	A*	NA	NA

A= standard mechanical seal with Viton elastomer
 B= standard mechanical seal with Teflon elastomer
 * = other seal materials available upon request.



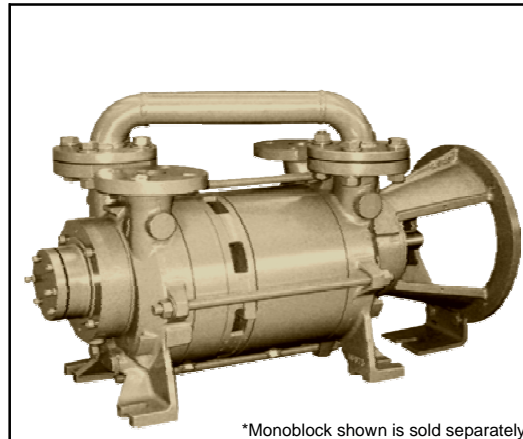
Dimensions (inches) not binding. Subject to change without notice. Companion flanges included.

Two-stage vacuum pump
DV0076B-DA

Presenting the **TITAN** SERIES
two-stage liquidring
vacuum pump.

Why should you consider this vacuum pump for your application?

- ◆ Designed for heavy duty applications.
- ◆ Optional monoblock adaptor available, which utilizes NEMA C-face motors.
- ◆ Manufactured to ISO 9001 standards.
- ◆ Low operating noise level.
- ◆ Heavy duty bearings mounted external to the pumping chamber.
- ◆ Features single face mechanical seals as standard.
- ◆ Double mechanical seals are available upon request.
- ◆ Virtually no maintenance is required.
- ◆ Pumps are available in different materials to suit your application.
- ◆ Capable of handling saturated gas mixtures.
- ◆ Capable of handling small amounts of liquids.
- ◆ Only one moving part.
- ◆ Can operate using various seal-fluids.



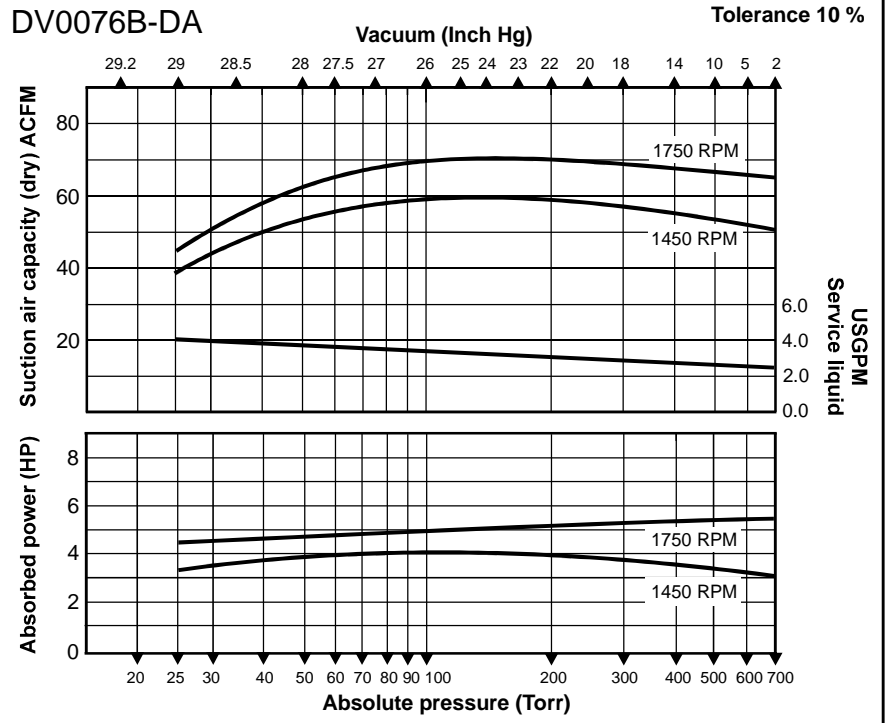
*Monoblock shown is sold separately

Performance characteristics

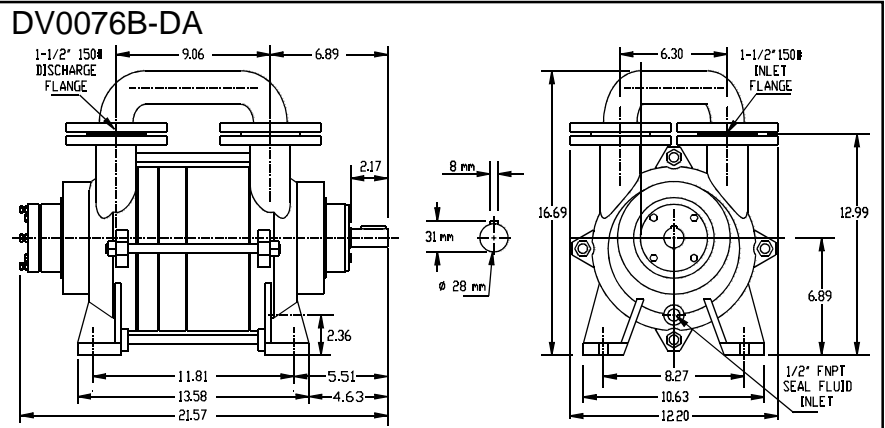
Nominal capacity:	75CFM
Motor:	50Hz/4HP/3KW 60Hz/5HP/3.8KW
Speed(RPM):	50Hz/1450 60Hz/1750
Max.vacuum:	29"Hg/25Torr
Weight (bare-shaft):	148Lbs/67kg
Max. gas inlet temp:	212°F/100°C
Max.noise level(at 3ft):	68dBA

Performance based on dry air, seal-water temperature 60°F and atmospheric pressure of 29.92"Hg.

DV0076B-DA



DV0076B-DA



Materials of construction/Seal code				
Mat.code	1	2	3	4
Casing	NA	cast iron	cast iron	316SS
Portplate	NA	cast iron	cast iron	316SS
Impeller	NA	bronze	316 SS	316SS
Shaft	NA	420 SS	420 SS	316SS
Seal code	NA	A*	A*	B*

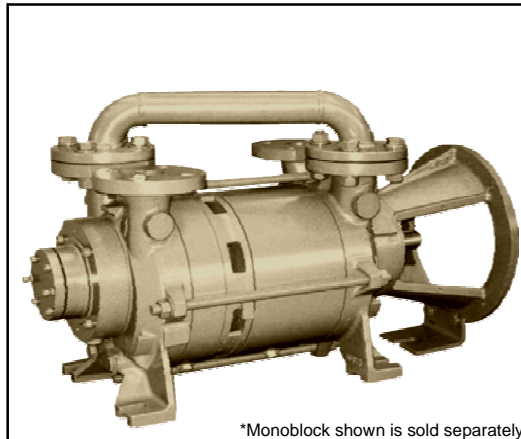
A= standard mechanical seal with Viton elastomer
 B= standard mechanical seal with Teflon elastomer
 * = other seal materials available upon request.

Dimensions (inches) not binding. Subject to change without notice. Companion flanges included.

Presenting the **TITAN** SERIES
two-stage liquidring
vacuum pump.

Why should you consider this vacuum pump for your application?

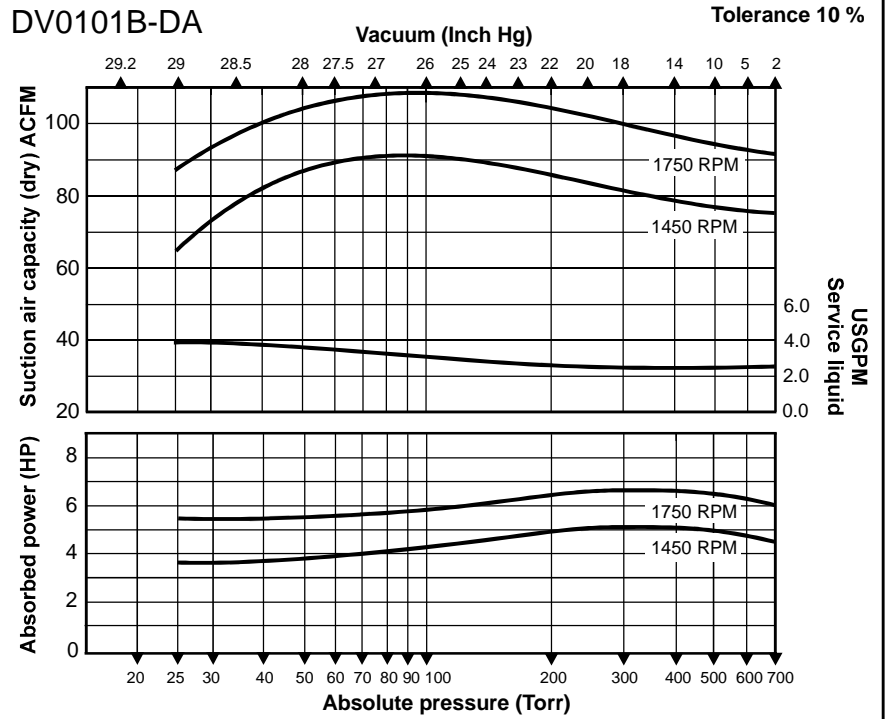
- ◆ Designed for heavy duty applications.
- ◆ Optional monoblock adaptor available, which utilizes NEMA C-face motors.
- ◆ Manufactured to ISO 9001 standards.
- ◆ Low operating noise level.
- ◆ Heavy duty bearings mounted external to the pumping chamber.
- ◆ Features single face mechanical seals as standard.
- ◆ Double mechanical seals are available upon request.
- ◆ Virtually no maintenance is required.
- ◆ Pumps are available in different materials to suit your application.
- ◆ Capable of handling saturated gas mixtures.
- ◆ Capable of handling small amounts of liquids.
- ◆ Only one moving part.
- ◆ Can operate using various seal-fluids.



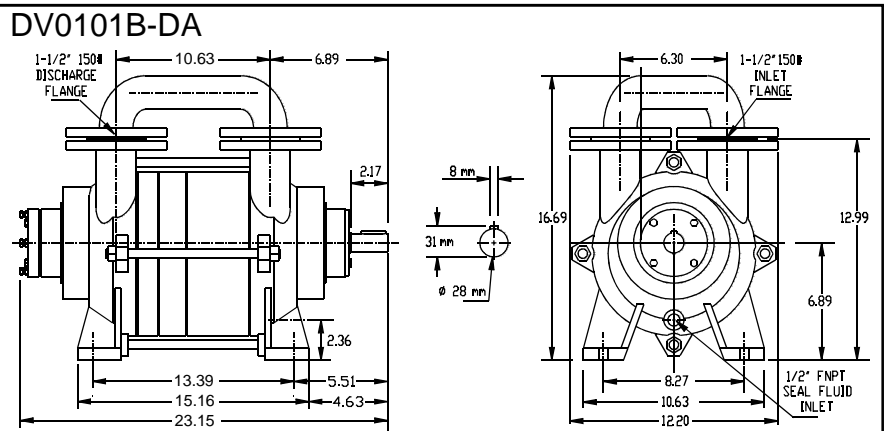
*Monoblock shown is sold separately

Performance characteristics
 Nominal capacity: 100CFM
 Motor: 50Hz/5HP/4kW
 60Hz/7.5HP/5.5kW
 Speed(RPM): 50Hz/1450
 60Hz/1750
 Max.vacuum: 29"Hg/25Torr
 Weight (bare-shaft): 154Lbs/70kg
 Max. gas inlet temp: 212°F/100°C
 Max.noise level(at 3ft):68 dBA
Performance based on dry air, seal-water temperature 60°F and atmospheric pressure of 29.92"Hg.

DV0101B-DA



DV0101B-DA



Materials of construction/Seal code				
Mat.code	1	2	3	4
Casing	cast iron	cast iron	cast iron	316 SS
Portplate	cast iron	cast iron	cast iron	316 SS
Impeller	duct.iron	bronze	316 SS	316 SS
Shaft	420 SS	420 SS	420 SS	316 SS
Seal code	A*	A*	A*	B*

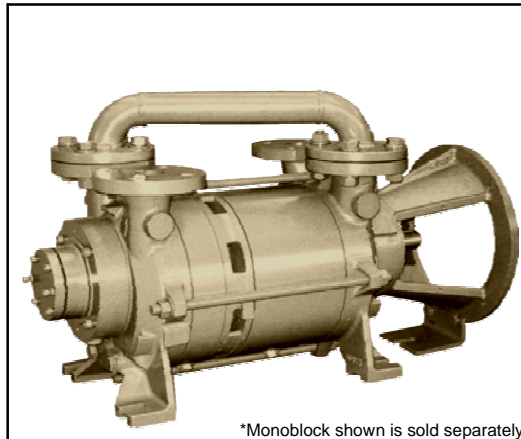
A= standard mechanical seal with Viton elastomer
 B= standard mechanical seal with Teflon elastomer
 *= other seal materials available upon request.

Dimensions (inches) not binding. Subject to change without notice. Companion flanges NOT included.

Presenting the **TITAN** SERIES
*two-stage liquidring
vacuum pump.*

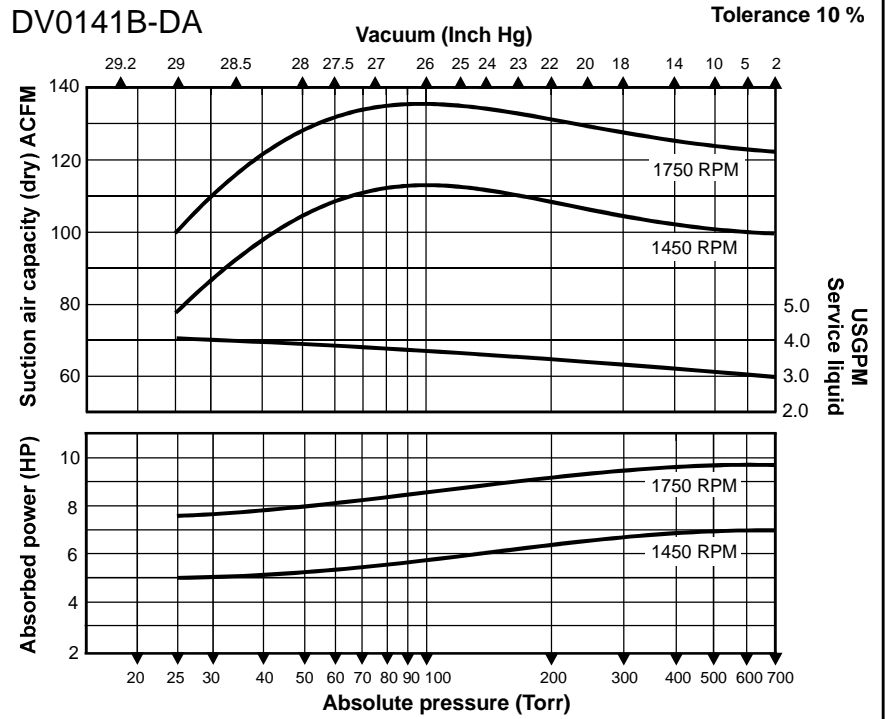
Why should you consider this vacuum pump for your application?

- ◆ Designed for heavy duty applications.
- ◆ Optional monoblock adaptor available, which utilizes NEMA C-face motors.
- ◆ Manufactured to ISO 9001 standards.
- ◆ Low operating noise level.
- ◆ Heavy duty bearings mounted external to the pumping chamber.
- ◆ Features single face mechanical seals as standard.
- ◆ Double mechanical seals are available upon request.
- ◆ Virtually no maintenance is required.
- ◆ Pumps are available in different materials to suit your application.
- ◆ Capable of handling saturated gas mixtures.
- ◆ Capable of handling small amounts of liquids.
- ◆ Only one moving part.
- ◆ Can operate using various seal-fluids.

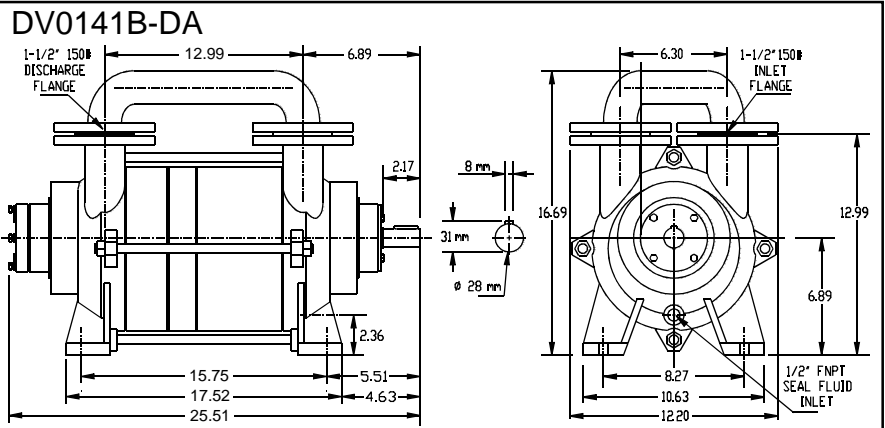


Performance characteristics
 Nominal capacity: 140CFM
 Motor: 50Hz/7.5HP/5.5kW
 60Hz/10HP/7.5kW
 Speed(RPM): 50Hz/1450
 60Hz/1750
 Max.vacuum: 29"Hg/25Torr
 Weight (bare-shaft): 172Lbs/78kg
 Max. gas inlet temp: 212°F/100°C
 Max.noise level(at 3ft):68 dBA
Performance based on dry air, seal-water temperature 60°F and atmospheric pressure of 29.92"Hg.

DV0141B-DA



DV0141B-DA



Materials of construction/Seal code				
Mat.code	1	2	3	4
Casing	cast iron	cast iron	cast iron	316 SS
Portplate	cast iron	cast iron	cast iron	316 SS
Impeller	duct.iron	bronze	316 SS	316 SS
Shaft	420 SS	420 SS	420 SS	316 SS
Seal code	A*	A*	A*	B*

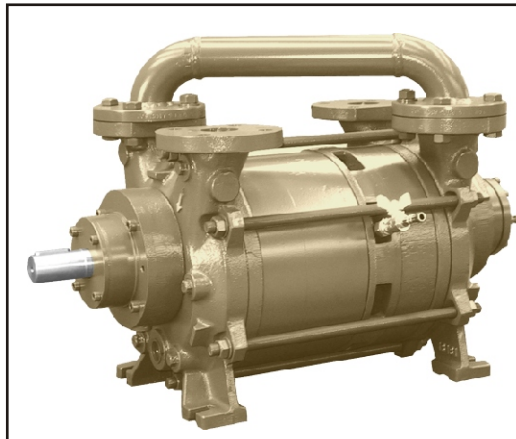
A= standard mechanical seal with Viton elastomer
 B= standard mechanical seal with Teflon elastomer
 * = other seal materials available upon request.

Dimensions (inches) not binding. Subject to change without notice. Companion flanges NOT included.

Presenting the **TITAN** SERIES
two-stage liquidring
vacuum pump.

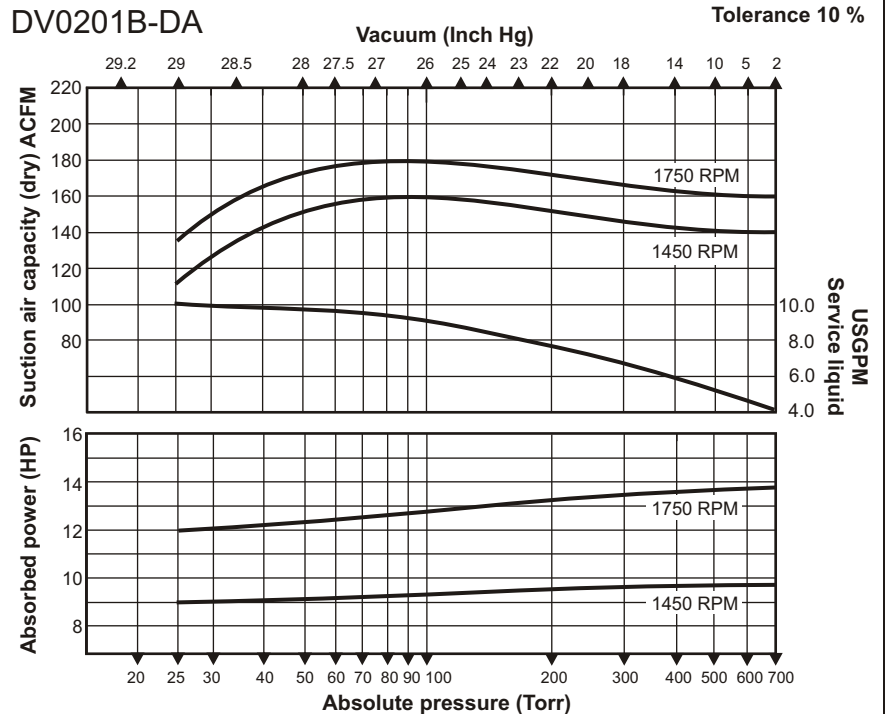
Why should you consider this vacuum pump for your application?

- ◆ Designed for heavy duty applications.
- ◆ Optional monoblock adaptor available, which utilizes NEMA C-face motors.
- ◆ Manufactured to ISO 9001 standards.
- ◆ Low operating noise level.
- ◆ Heavy duty bearings mounted external to the pumping chamber.
- ◆ Features single face mechanical seals as standard.
- ◆ Double mechanical seals are available upon request.
- ◆ Virtually no maintenance is required.
- ◆ Pumps are available in different materials to suit your application.
- ◆ Capable of handling saturated gas mixtures.
- ◆ Capable of handling small amounts of liquids.
- ◆ Only one moving part.
- ◆ Can operate using various seal-fluids.

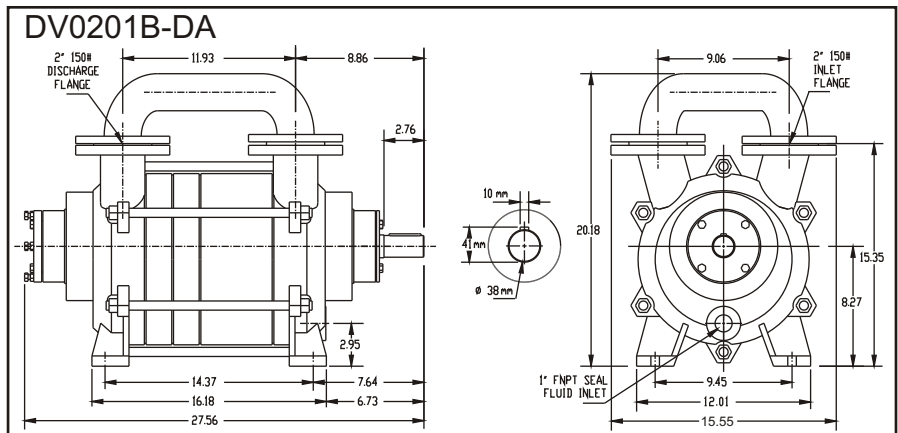


Performance characteristics
 Nominal capacity: 200CFM
 Motor: 50Hz/10HP/7.5kW
 60Hz/15HP/11kW
 Speed(RPM): 50Hz/1450
 60Hz/1750
 Max.vacuum: 29"Hg/25Torr
 Weight (bare-shaft): 290Lbs/132kg
 Max. gas inlet temp: 212°F/100°C
 Max.noise level(at 3ft):73 dBA
Performance based on dry air, seal-water temperature 60°F and atmospheric pressure of 29.92"Hg.

DV0201B-DA



DV0201B-DA



Materials of construction/Seal code				
Mat.code	1	2	3	4
Casing	cast iron	cast iron	cast iron	316 SS
Portplate	cast iron	cast iron	cast iron	316 SS
Impeller	duct.iron	bronze	316 SS	316 SS
Shaft	420 SS	420 SS	420 SS	316 SS
Seal code	A*	A*	A*	B*

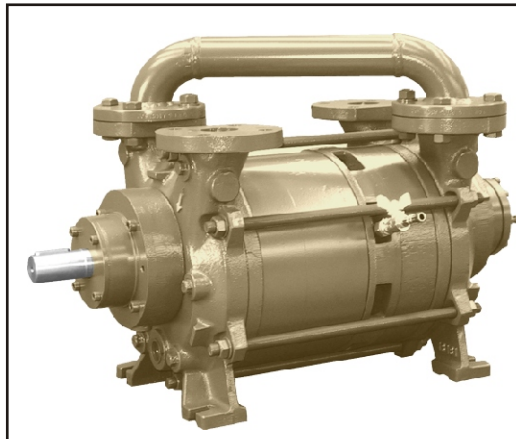
A= standard mechanical seal with Viton elastomer
 B= standard mechanical seal with Teflon elastomer
 * = other seal materials available upon request.

Dimensions (inches) not binding. Subject to change without notice. Companion flanges NOT included.

Presenting the **TITAN** SERIES
two-stage liquidring
vacuum pump.

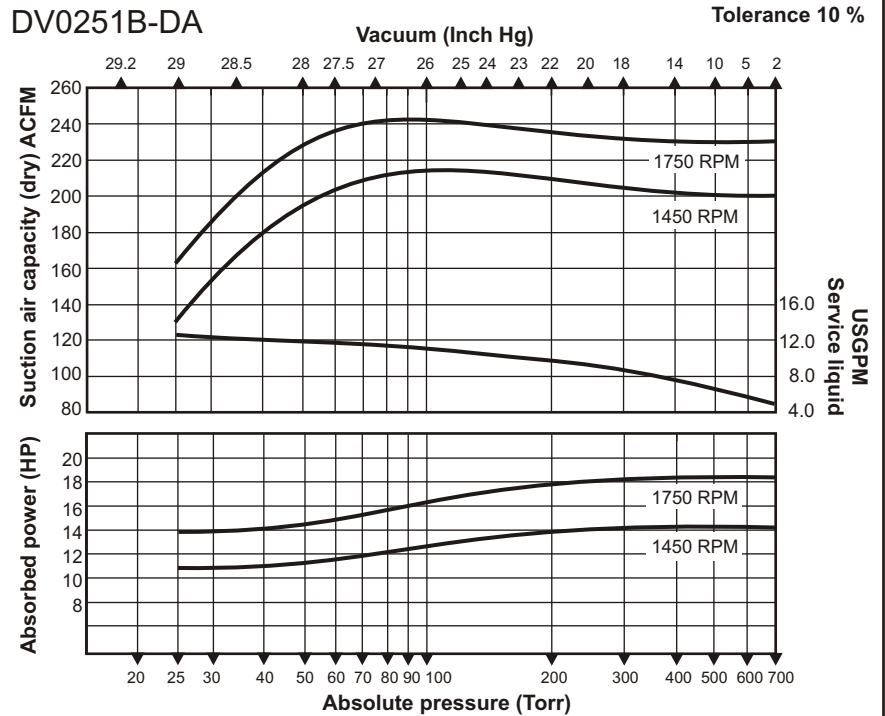
Why should you consider this vacuum pump for your application?

- ◆ Designed for heavy duty applications.
- ◆ Optional monoblock adaptor available, which utilizes NEMA C-face motors.
- ◆ Manufactured to ISO 9001 standards.
- ◆ Low operating noise level.
- ◆ Heavy duty bearings mounted external to the pumping chamber.
- ◆ Features single face mechanical seals as standard.
- ◆ Double mechanical seals are available upon request.
- ◆ Virtually no maintenance is required.
- ◆ Pumps are available in different materials to suit your application.
- ◆ Capable of handling saturated gas mixtures.
- ◆ Capable of handling small amounts of liquids.
- ◆ Only one moving part.
- ◆ Can operate using various seal-fluids.

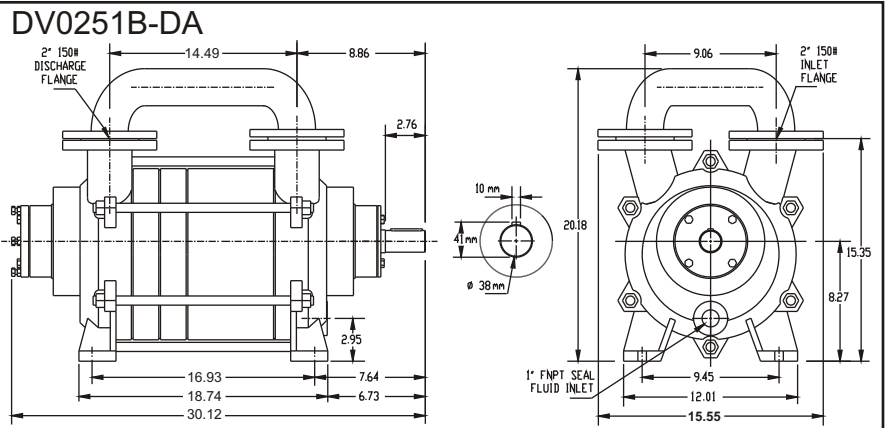


Performance characteristics
 Nominal capacity: 250CFM
 Motor: 50Hz/15HP/11kW
 60Hz/20HP/15kW
 Speed(RPM): 50Hz/1450
 60Hz/1750
 Max.vacuum: 29"Hg/25Torr
 Weight (bare-shaft): 315Lbs/143kg
 Max. gas inlet temp: 212°F/100°C
 Max.noise level(at 3ft):73 dBA
Performance based on dry air, seal-water temperature 60°F and atmospheric pressure of 29.92"Hg.

DV0251B-DA



DV0251B-DA



Materials of construction/Seal code				
Mat.code	1	2	3	4
Casing	cast iron	cast iron	cast iron	316 SS
Portplate	cast iron	cast iron	cast iron	316 SS
Impeller	duct.iron	bronze	316 SS	316 SS
Shaft	420 SS	420 SS	420 SS	316 SS
Seal code	A*	A*	A*	B*

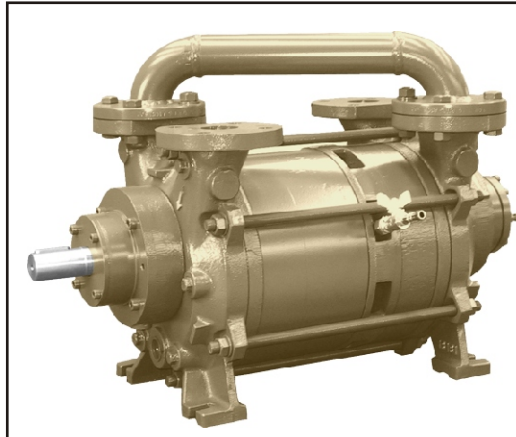
A= standard mechanical seal with Viton elastomer
 B= standard mechanical seal with Teflon elastomer
 * = other seal materials available upon request.

Dimensions (inches) not binding. Subject to change without notice. Companion flanges NOT included.

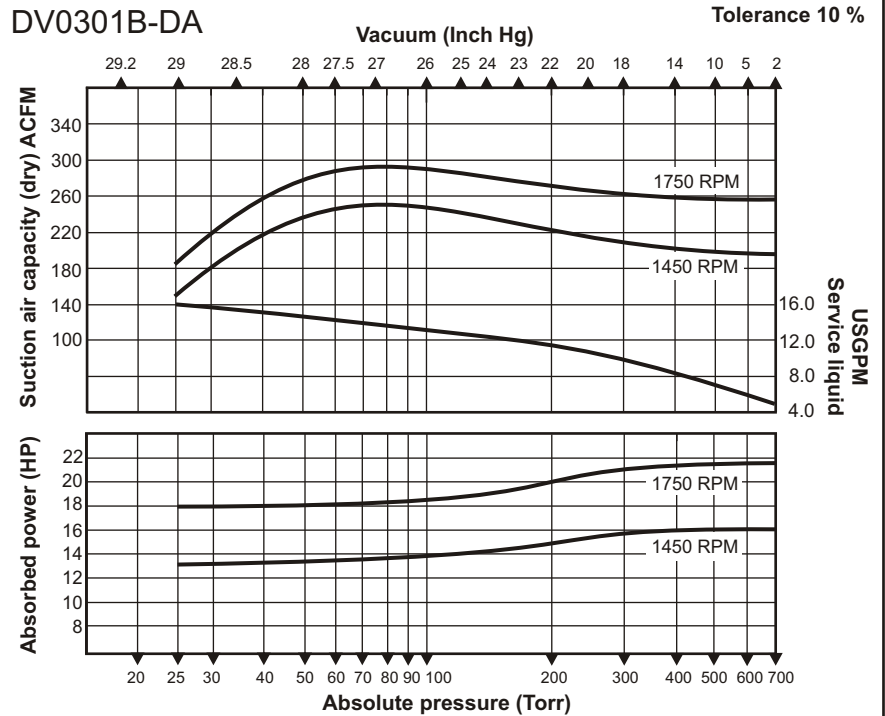
Presenting the **TITAN** SERIES
two-stage liquidring
vacuum pump.

Why should you consider this vacuum pump for your application?

- ◆ Designed for heavy duty applications.
- ◆ Optional monoblock adaptor available, which utilizes NEMA C-face motors.
- ◆ Manufactured to ISO 9001 standards.
- ◆ Low operating noise level.
- ◆ Heavy duty bearings mounted external to the pumping chamber.
- ◆ Features single face mechanical seals as standard.
- ◆ Double mechanical seals are available upon request.
- ◆ Virtually no maintenance is required.
- ◆ Pumps are available in different materials to suit your application.
- ◆ Capable of handling saturated gas mixtures.
- ◆ Capable of handling small amounts of liquids.
- ◆ Only one moving part.
- ◆ Can operate using various seal-fluids.

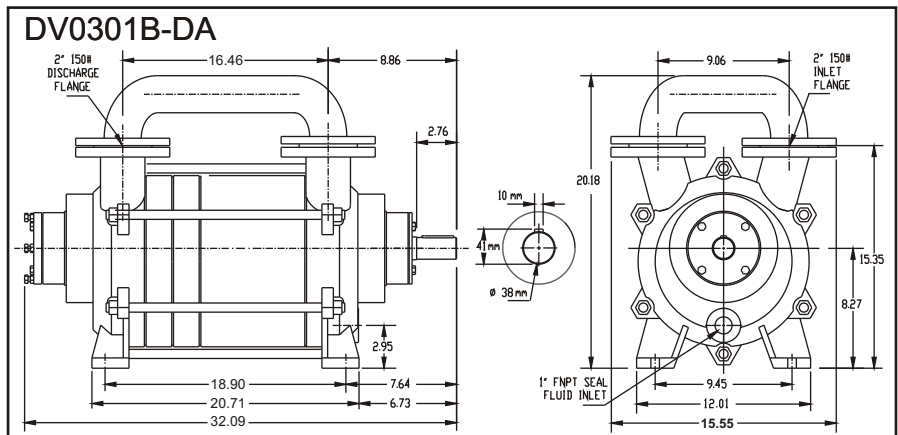


Performance characteristics
 Nominal capacity: 300CFM
 Motor: 50Hz/20HP/15kW
 60Hz/25HP/18.5kW
 Speed(RPM): 50Hz/1450
 60Hz/1750
 Max.vacuum: 29"Hg/25Torr
 Weight (bare-shaft): 330Lbs/150kg
 Max. gas inlet temp: 212°F/100°C
 Max.noise level(at 3ft):74 dBA
Performance based on dry air, seal-water temperature 60°F and atmospheric pressure of 29.92"Hg.



Materials of construction/Seal code				
Mat.code	1	2	3	4
Casing	cast iron	cast iron	cast iron	316 SS
Portplate	cast iron	cast iron	cast iron	316 SS
Impeller	duct.iron	bronze	316 SS	316 SS
Shaft	420 SS	420 SS	420 SS	316 SS
Seal code	A*	A*	A*	B*

A= standard mechanical seal with Viton elastomer
 B= standard mechanical seal with Teflon elastomer
 * = other seal materials available upon request.

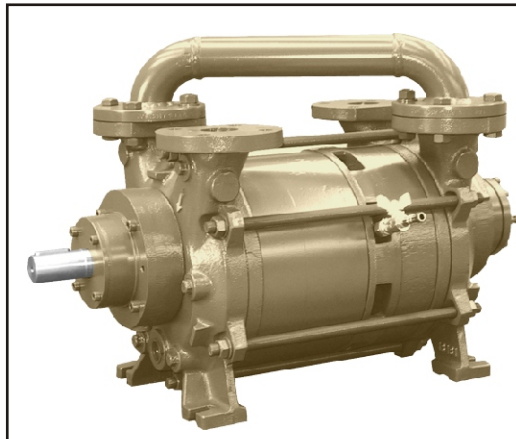


Dimensions (inches) not binding. Subject to change without notice. Companion flanges NOT included.

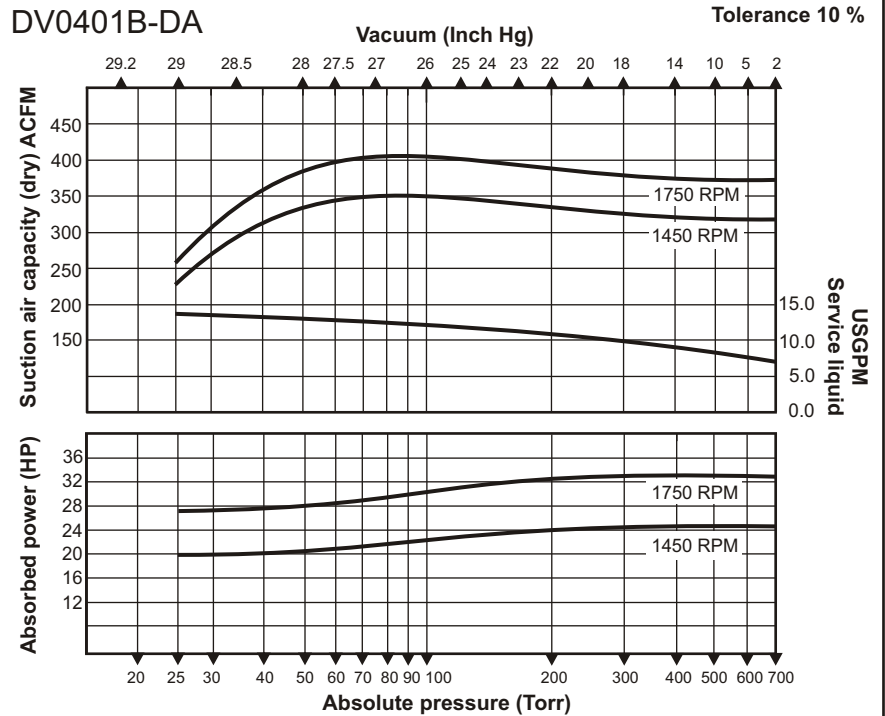
Presenting the **TITAN** SERIES
*two-stage liquidring
vacuum pump.*

Why should you consider this vacuum pump for your application?

- ◆ Designed for heavy duty applications.
- ◆ Manufactured to ISO 9001 standards
- ◆ Low operating noise level.
- ◆ Heavy duty bearings mounted external to the pumping chamber.
- ◆ Features single face mechanical seals as standard.
- ◆ Double mechanical seals are available upon request
- ◆ Virtually no maintenance is required.
- ◆ Pumps are available in different materials to suit your application.
- ◆ Capable of handling saturated gas mixtures.
- ◆ Capable of handling small amounts of liquids.
- ◆ Only one moving part.
- ◆ Can operate using various seal fluids.

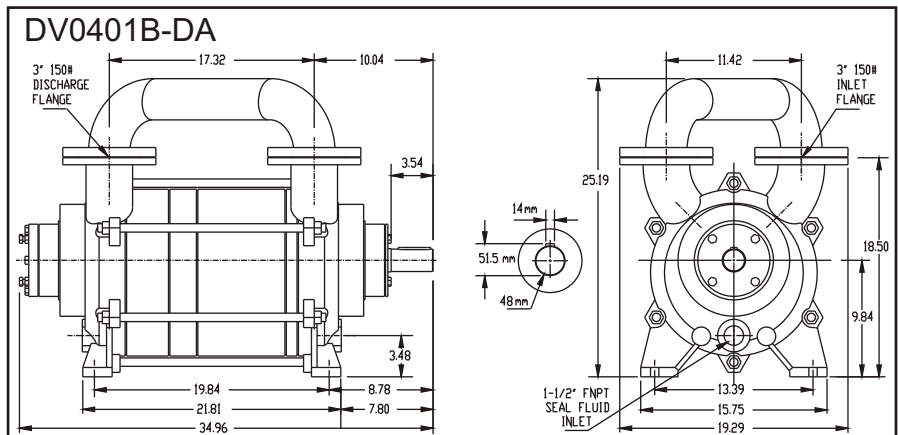


Performance characteristics
 Nominal capacity: 400CFM
 Motor: 50Hz/25HP/18.5kW
 60Hz/40HP/30kW
 Speed(RPM): 50Hz/1450
 60Hz/1750
 Max.vacuum: 29"Hg/25Torr
 Weight (bare-shaft): 495Lbs/225kg
 Max. gas inlet temp: 212°F/100°C
 Max.noise level(at 3ft):79 dBA
Performance based on dry air, seal-water temperature 60°F and atmospheric pressure of 29.92"Hg.



Materials of construction/Seal code				
Mat.code	1	2	3	4
Casing	NA	cast iron	cast iron	316 SS
Portplate	NA	cast iron	cast iron	316 SS
Impeller	NA	bronze	316 SS	316 SS
Shaft	NA	420 SS	420 SS	316 SS
Seal code	NA	A*	A*	B*

A= standard mechanical seal with Viton elastomer
 B= standard mechanical seal with Teflon elastomer
 * = other seal materials available upon request.

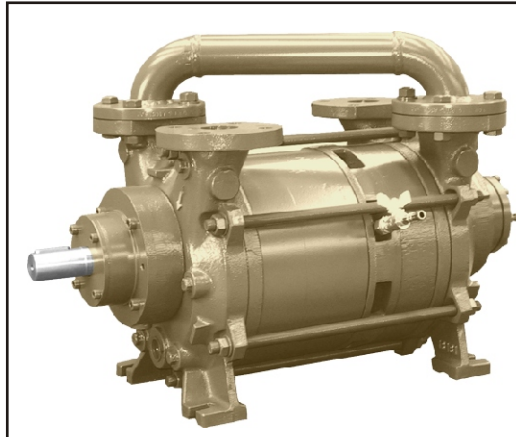


Dimensions (inches) not binding. Subject to change without notice. Companion flanges NOT included.

Presenting the **TITAN** SERIES
*two-stage liquidring
vacuum pump.*

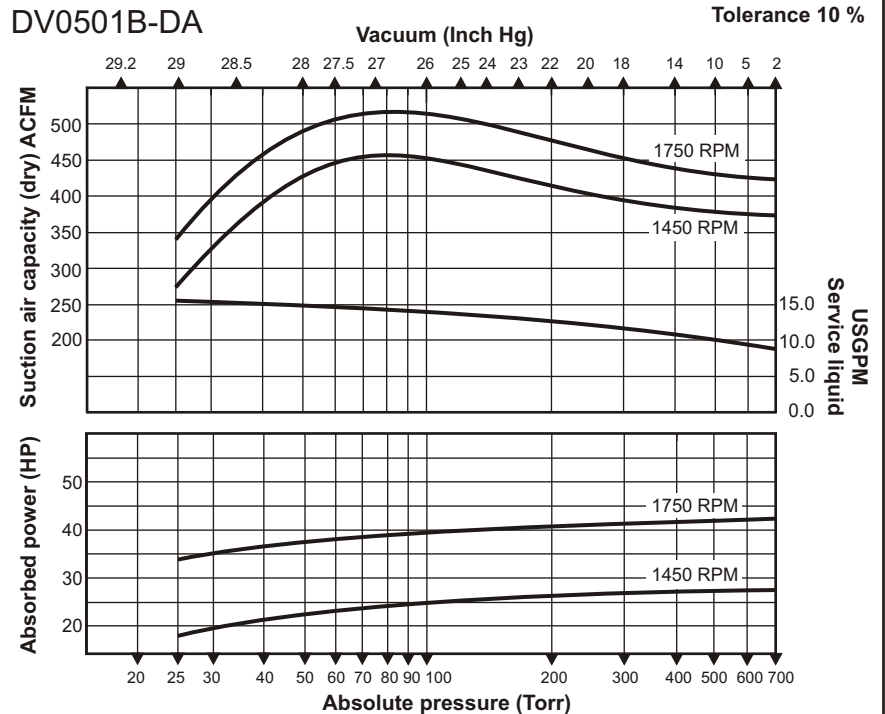
Why should you consider this vacuum pump for your application?

- ◆ Designed for heavy duty applications.
- ◆ Manufactured to ISO 9001 standards
- ◆ Low operating noise level.
- ◆ Heavy duty bearings mounted external to the pumping chamber.
- ◆ Features single face mechanical seals as standard.
- ◆ Double mechanical seals are available upon request
- ◆ Virtually no maintenance is required.
- ◆ Pumps are available in different materials to suit your application.
- ◆ Capable of handling saturated gas mixtures.
- ◆ Capable of handling small amounts of liquids.
- ◆ Only one moving part.
- ◆ Can operate using various seal-fluids.

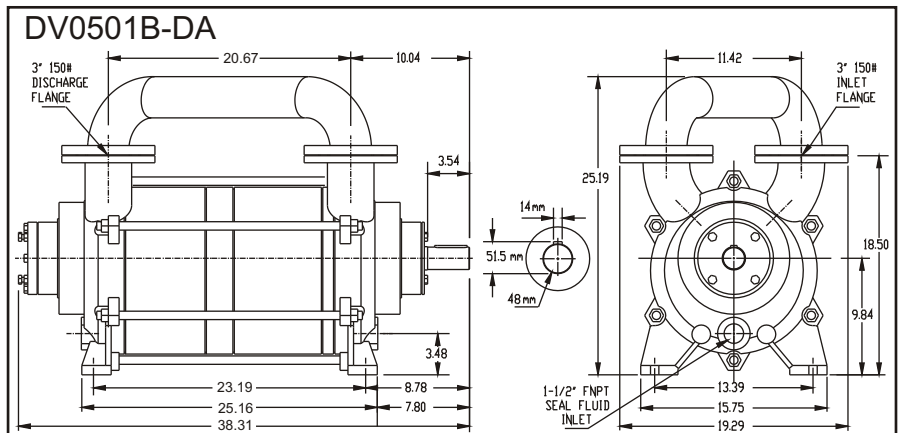


Performance characteristics
 Nominal capacity: 500CFM
 Motor: 50Hz/40HP/30kW
 60Hz/50HP/37kW
 Speed(RPM): 50Hz/1450
 60Hz/1750
 Max.vacuum: 29"Hg/25Torr
 Weight (bare-shaft): 539Lbs/245kg
 Max. gas inlet temp: 212°F/100°C
 Max.noise level(at 3ft):79 dBA
Performance based on dry air, seal-water temperature 60°F and atmospheric pressure of 29.92"Hg.

DV0501B-DA



DV0501B-DA



Materials of construction/Seal code				
Mat.code	1	2	3	4
Casing	NA	cast iron	cast iron	316 SS
Portplate	NA	cast iron	cast iron	316 SS
Impeller	NA	bronze	316 SS	316 SS
Shaft	NA	420 SS	420 SS	316 SS
Seal code	NA	A*	A*	B*

A= standard mechanical seal with Viton elastomer
 B= standard mechanical seal with Teflon elastomer
 * = other seal materials available upon request.

Dimensions (inches) not binding. Subject to change without notice. Companion flanges NOT included.