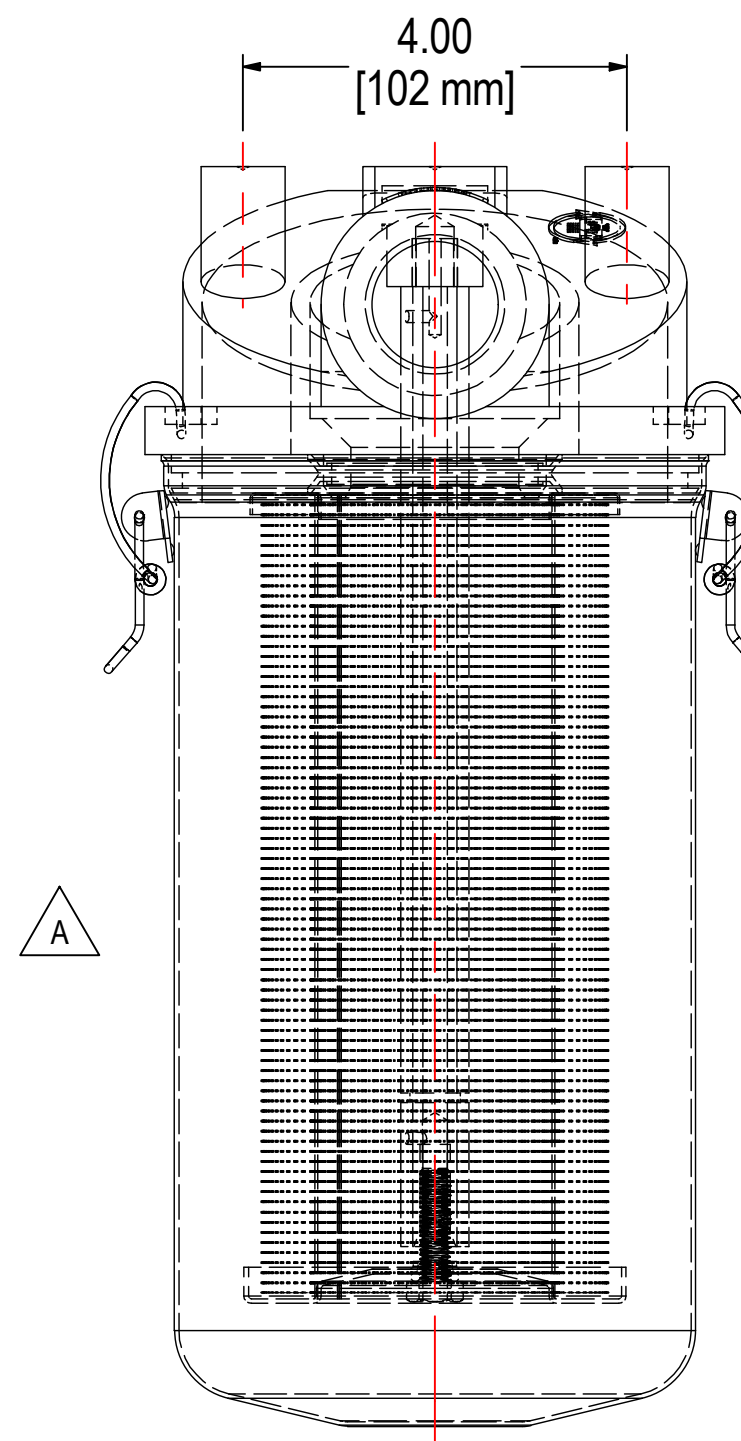
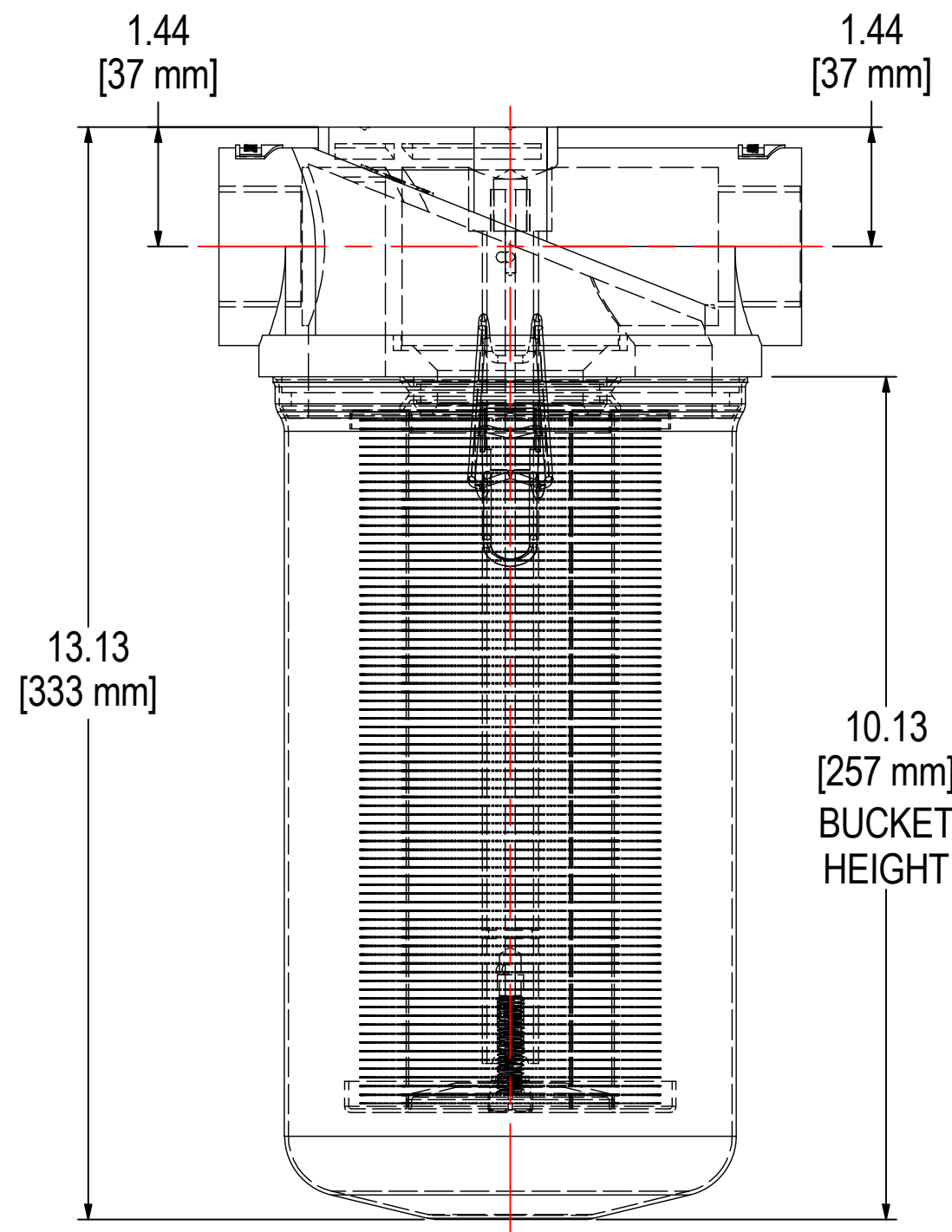
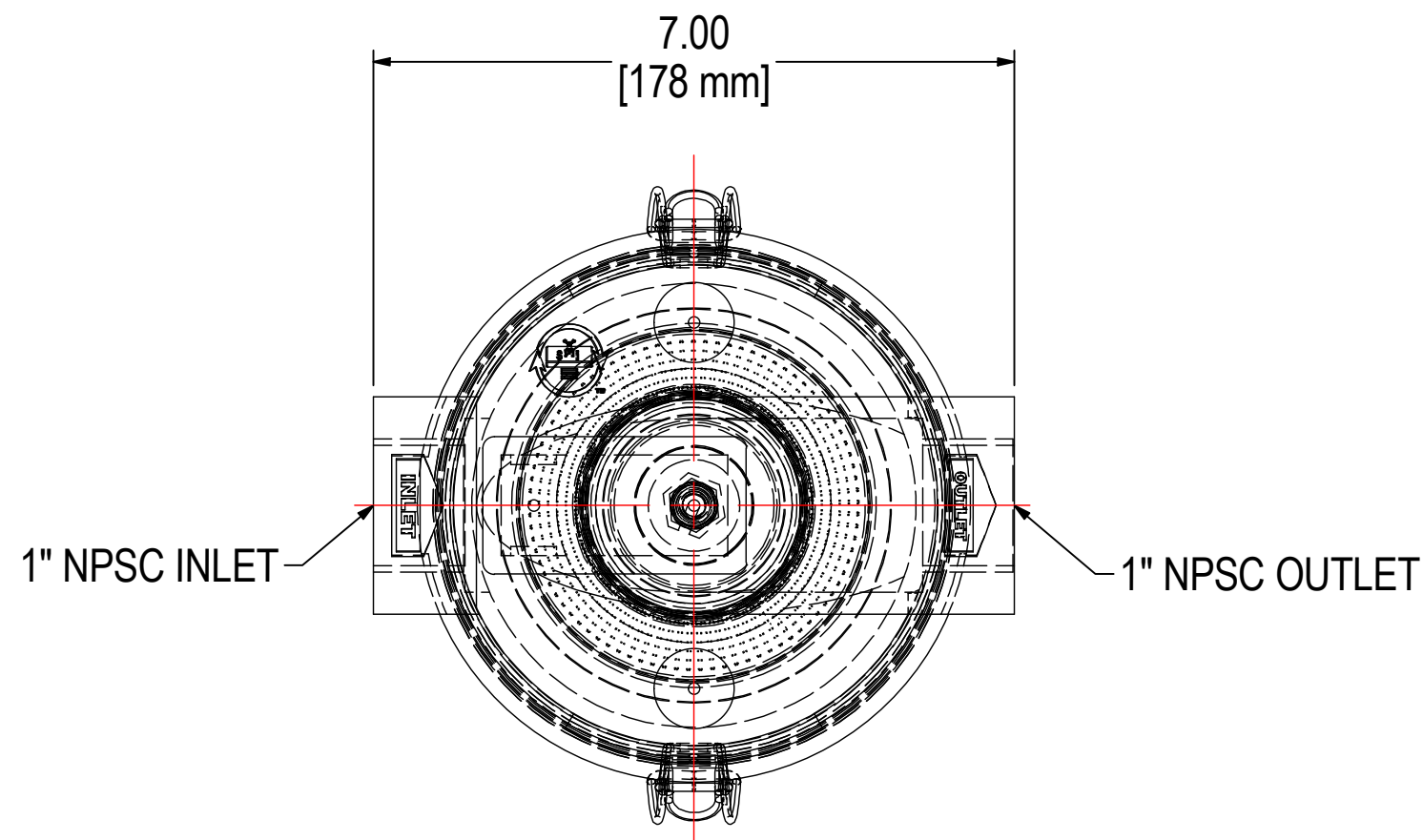


REV	DESCRIPTION	ECN #	CHG BY	DATE	APP'D
A	CREATED SIDE VIEW		WEB	10/03/19	NAD



ELEMENT SPECS	
PART NUMBER	897
MATERIAL	Polyester
FLOW RATE	80 CFM 136 m ³ /hr
SURFACE AREA	2.1 ft ² 0.2 m ²
I.D.	2.38" 60mm
O.D.	3.98" 101mm
HEIGHT	8.44" 214mm

MODEL #: CT-897-100C MATERIAL: CAST ALUMINUM/CARBON STEEL FINISH: NONE/BLACK POWDER

MODEL NUMBER: CT-897-100C SHEET: 1 OF 1

DESCRIPTION: CT-897-100C, BLACK

PROJECT: DRAWN BY: CRW APPROVED BY: M.C. REV: A
DATE: 6/3/2015 DATE: 6/3/2015

THE INFORMATION CONTAINED HEREIN IS CONFIDENTIAL AND THE PROPERTY OF SOLBERG MANUFACTURING INC. AND IT IS FURNISHED TO YOU WITH THE EXPRESS UNDERSTANDING THAT IT WILL NOT BE REPRODUCED, COPIED IN ANY MANNER, LOANED OR OTHERWISE TRANSFERRED TO OTHERS ENTIRELY OR IN PART, NOR USED FOR ANY PURPOSE OTHER THAN FOR WHICH IT WAS FURNISHED. IT WILL BE RETURNED UPON REQUEST TO SOLBERG MANUFACTURING INC. THE ABOVE RESTRICTION IS IN ADDITION TO, AND DOES NOT IN ANY WAY ALTER, ANY OTHER RESTRICTIONS WHICH MAY APPLY TO THE INFORMATION CONTAINED HEREIN.

TOLERANCES
DIMENSIONS ARE FOR REFERENCE ONLY. ALL DIMENSIONS ARE SUBJECT TO CHANGE UPON PRODUCTION.
UNLESS OTHERWISE SPECIFIED:
-DIMENSIONS ARE IN INCHES
-REF: APPROXIMATE DIMENSIONS, NO TOLERANCES APPLY
-FINISH: BREAK EDGES TO .005-.020 RADIUS/CHAMFER

SOLBERG[®]
Filtration • Separation • Silencing
630.773.1363 • www.solbergmfg.com