
AC Series AfterCoolers

Air-cooled aftercoolers for your compressed air system.

Van Air Systems Air-Cooled aftercooler offers the best of both worlds in one compact, side by side, combination package. The design features rugged brazed aluminum bar & plate construction with detachable legs for ease of mounting. In a single combined core, the high-performing unit cools rotary screw compressor oil and compressed air. The compact design makes this unit ideal for field conversions, stringent space requirements and remote location mounting.

Aftercoolers can be used in a variety of applications:

- Best to be installed before a compressed air dryer
- Anytime compressed air temps exceed 100°F
- Perfect for rotary screw compressors
- Stationary cooling

**F
E
A
T
U
R
E
S**

Horizontal or vertical flow directions

Compact and light weight

High Flows 50- 3500 CFM

Detachable Legs



BENEFITS OF AFTER-COOLERS

Energy efficient // Rugged Design // High Performance

vanairsystems.com

STANDARD EQUIPMENT

Ratings:

Maximum Operating Pressure: 250 PSI
Maximum Operating Temperature: 350°F

Materials:

Cabinet - Steel with baked enamel finish
Core - Brazed aluminum bar and plate
Fan - Aluminum hub, polypropylene blades
Motor - TEFC
Fan Guard - Steel with baked enamel finish
Voltage options: 115/230-1-60
230/460-3-60

OPTIONAL EQUIPMENT

- Flex hose
- Moisture separator
- Automatic float drain

DIMENSIONS & SPECIFICATIONS

Model No.	A		B		C		D		E		F		G		H		J		K		L		In/Out Conn.	Motor HP	Voltage Options	AC Wt.
	in	cm	in	cm	in	cm	in	cm	in	cm	in	cm	in	cm	in	cm	in	cm	in	cm	in	cm				
AC-65	16	41	14.1	36	14	36	6	20	12	21	0.63	1.6	7	18	13	33	7	17	5	13	14	36	1" NPT	1/3	1	40
AC-105	16	41	14.1	36	15.1	13	7.3	39	12	39	1.31	3.3	8	20	14	10	8	20	5	13	14	36	1 1/2" NPT	1/3	1	45
AC-125	20	51	47	119	16.2	41	7.3	21	16	21	1.31	3.3	8	20	14	10	8	20	5	13	18	46	1 1/2" NPT	1/3	1	55

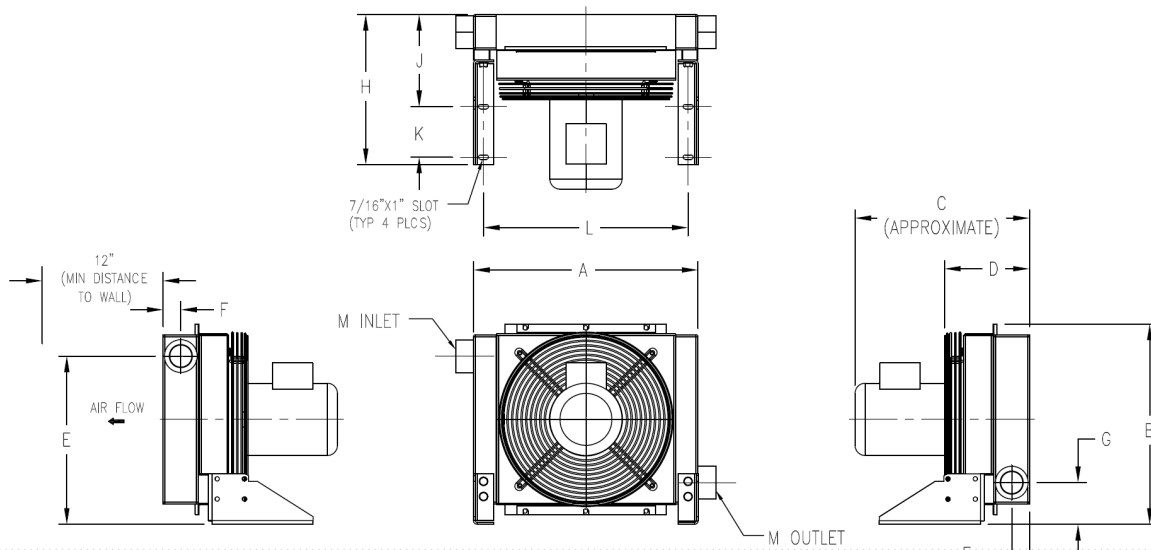
CAPACITIES Maximum SCFM with 5, 10, 15 and 20°F approach

Model No.	150°F INLET Approach °F				200°F INLET Approach °F				250°F INLET Approach °F				300°F INLET Approach °F				350°F INLET Approach °F			
	5	10	15	20	5	10	15	20	5	10	15	20	5	10	15	20	5	10	15	20
AC-65-2	29	61	87	101	26	56	69	82	24	45	62	74	21	37	51	61	19	34	45	54
AC-105-2	56	112	158	180	51	105	126	149	47	85	116	138	40	71	97	114	37	67	85	101
AC-125-2	109	216	296	337	97	204	241	280	90	166	223	265	77	138	189	220	72	130	166	196

Maximum operating pressure: 250 PSIG. Maximum operating temperature: 350°F. Pressure drop less than 3 PSI. *Maximum flow for 3 PSI pressure drop.

OPTIONAL EQUIPMENT

Model	Separator		Float Drain		Flex Hose				
	model	Inlet Conn.	Outlet Conn.	model	model	in	cm	lbs	kg
AC-65	S-10-AD	1" NPT	1/8" NPT	FD-1	FH-1	12	30	2	1
AC-105	S-30-M	1 1/2" NPT	1/4" NPT	FD-1	FH-1-1/2	16	41	3	1.3
AC-125	S-30-M	1 1/2" NPT	1/4" NPT	FD-1	FH-1-1/2	16	41	3	1.3



2950 Mechanic Street, Lake City, PA 16423, USA | Toll Free Phone 800-840-9906 | Corporate Fax 814-774-0778 | Order Entry Fax 814-774-3482

Distributed By:

VAN AIR SYSTEMS



vanairsystems.com